

• Rabbit Anti-Ghrelin/Obestatin Polyclonal Antibody

Primary Antibodies

Background:

Ghrelin is an endogenous ligand for the growth hormone secretagogue receptor (GHSR; MIM 601898) and is involved in regulating growth hormone (GH; MIM 139250) release. Ghrelin is derived from a prehormone called preproghrelin, which also generates a second peptide called obestatin. Obestatin is an endogenous ligand for the orphan G protein-coupled receptor GPR39(MIM 602886) and is involved in satiety and decreased food intake.

Source/Purification:

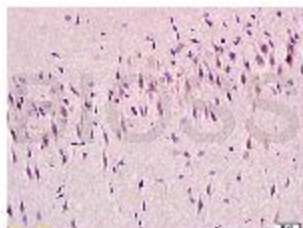
KLH conjugated synthetic peptide derived from human Ghrelin. Was purified by Protein A and peptide affinity chromatography.

Storage: Prepared as lyophilized powder or liquid and shipped on ice. Store at -20°C for one year.

Reconstitution:

If the antibody is in liquid form, no reconstitution needed.

Reconstitution is only required for the lyophilized antibody. Please refer to the reconstitution instruction card in the package.



Size: 100ul or 100ug lyophilized

Concentration: 1ug/uL

Host: Rabbit

Reactivities:

Human, Mouse, Rat, Dog, Pig, Cow, Sheep,

Application:

- WB(1: 100-500)
- ELISA(1: 500-1000)
- IP(1: 20-100)
- IHC-P(1: 100-500)
- IHC-F(1: 100-500)
- IF(1: 100-500)
- Not yet tested in other applications.
Optimal working dilutions must be determined by the end user.

Antibody Type: Polyclonal

Isotype: IgG

Molecular Weight: 10kDa

Preservatives:

10ug/uL BSA and 0.1% NaN₃.

For research use only. CAUTION: Not for human or animal therapeutic or diagnostic use.