

## bs-0554R-HRP

### • Rabbit Anti-Collagen X Polyclonal Antibody, HRP conjugated

Conjugated Primary Antibodies

#### Background:

The collagen is one kind of short chain's non-thready collagen, is being everlasting lies in the chondrify bone center and in the bone epiphysis cartilage growth board, only sees in the cartilage cell large area and the calcification area front, sees in the articular cartilage in the calcareous cartilage level, expresses specially by the large cartilage cell, only short appears, possibly participates in the cartilage calcification the adjustment, is symbol which normal and the unusual bone forms. Some scholars thought: The collagen may symbolize in the osseous arthrosis as the cartilage cell phenotype irreversible diagnosis that is the massive articular cartilage cell occurs perishes weakly, causes the articular cartilage to thin finally, under the joint the bone stiffens, the accumulation primary cause.

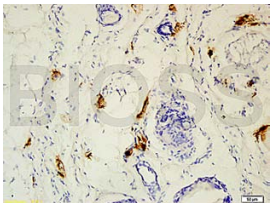
**Purification:** Was purified by Protein A and peptide affinity chromatography.

**Storage:** Prepared as lyophilized powder or liquid and shipped on ice. Store at -20°C for one year.

#### Reconstitution:

If the antibody is in liquid form, no reconstitution needed.

Reconstitution is only required for the lyophilized antibody. Please refer to the reconstitution instruction card in the package.



For full size images and description please click [HERE](#).

**Size:** 100ul or 100ug lyophilized

**Concentration:** 1ug/uL

**Host:** Rabbit

#### Reactivities:

Human, Mouse, Rat, Chicken, Dog, Cow, Rabbit,

#### Application:

- WB(1:100-500)
- ELISA(1:500-1000)
- IHC-P(1:100-500)
- IHC-F(1:100-500)
- Not yet tested in other applications.  
Optimal working dilutions must be determined by the end user.

**Antibody Type:** Polyclonal

**Isotype:** IgG

**Molecular Weight:** 75kDa

#### Preservatives:

10ug/uL BSA and 0.01% Gentamicin.

For research use only. CAUTION: Not for human or animal therapeutic or diagnostic use.