

## bs-0565R-Biotin

### • Rabbit Anti-VEGFR2/FLK1 Polyclonal Antibody, Biotin conjugated

Conjugated Primary Antibodies

#### Background:

Hemangioblast Marker

VEGF receptor 2 is a member of a receptor tyrosine kinase family whose activation plays an essential role in a large number of biological processes such as embryonic development, wound healing, cell proliferation, migration and differentiation. Like other growth factor receptors, upon ligand binding VEGF receptor 2 dimerises and is autophosphorylated on multiple tyrosine residues. These sites can be involved in the regulation of kinase activity or serve as binding sites for SH2 and phosphotyrosine binding containing signalling proteins.

Phosphorylation of Tyrosines 1054 and 1059 in the activation loop is required for activation of VEGF receptor 2 and its intrinsic tyrosine kinase activity. In case of HIV-1 infection, the interaction with extracellular viral Tat protein seems to enhance angiogenesis in Kaposi's sarcoma lesions.

**Purification:** Was purified by Protein A and peptide affinity chromatography.

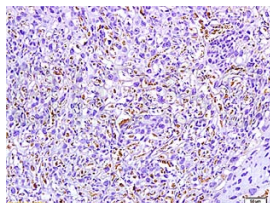
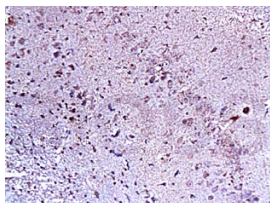
#### Storage:

Prepared as lyophilized powder and shipped on ice. Store at -20°C for one year as lyophilized powder or liquid. Please reconstitute before use.

#### Reconstitution:

If the antibody is in liquid form, no reconstitution needed.

Reconstitution is only required for the lyophilized antibody. Please refer to the reconstitution instruction card in the package.



For full size images and description please click [HERE](#).

**Size:** 100ul or 100ug lyophilized

**Concentration:** 1ug/uL

**Host:** Rabbit

#### Reactivities:

Human, Mouse, Rat, Chicken, Dog, Pig, Cow,

#### Application:

- WB(1:100-500)
- ELISA(1:500-1000)
- IHC-P(1:100-500)
- IHC-F(1:100-500)
- Not yet tested in other applications. Optimal working dilutions must be determined by the end user.

**Antibody Type:** Polyclonal

**Isotype:** IgG

**Molecular Weight:** 151kDa

#### Preservatives:

10ug/uL BSA and 0.1% NaN<sub>3</sub>.

For research use only. CAUTION: Not for human or animal therapeutic or diagnostic use.