

bs-0608R-A647

• Rabbit Anti-CD54/ICAM-1 Polyclonal Antibody, Alexa Fluor 647 conjugated

Conjugated Primary Antibodies

Background:

ICAM proteins are ligands for the leukocyte adhesion LFA-1 protein (Integrin alpha-L/beta-2). Subcellular Located at Membrane; single-pass type I membrane protein. Tissue Specified Expressed at low level on a subpopulation of lymphocytes, macrophages, and endothelial cells, but is strongly induced on these cells, and on fibroblasts and epithelial cells. [PTM] Monoubiquitinated, which is promoted by MARCH9 and leads to endocytosis (By similarity). It belongs to the immunoglobulin superfamily. ICAM family.

ICAM1 is a 85-110 kDa single chain type 1 integral membrane glycoprotein with an extracellular domain of five immunoglobulin superfamily repeats, a transmembrane region and a cytoplasmic domain. It shares considerable amino acid sequence homology with ICAM3 and with ICAM2. ICAM1 is expressed by activated endothelial cells. It is detected on cells of many other lineages (e.g. epithelial cells, fibroblasts, chondrocytes, B lymphocytes, T lymphocytes (low), monocytes, macrophages, dendritic cells and neutrophils), with lower levels that increase in inflammation. ICAM1 is also detected in some carcinoma and melanoma cells. Soluble ICAM1 is detectable in the plasma and is elevated in patients with various inflammatory syndromes. It is the receptor for rhinoviruses and malaria.

Purification: Was purified by Protein A and peptide affinity chromatography.

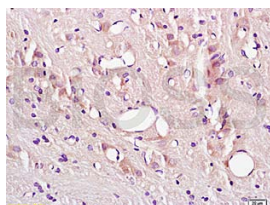
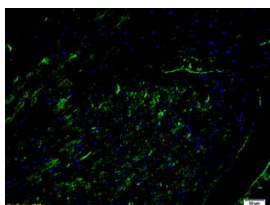
Storage:

Prepared as lyophilized powder or liquid and shipped on ice. Store at -20°C for one year. Protect from light.

Reconstitution:

If the antibody is in liquid form, no reconstitution needed.

Reconstitution is only required for the lyophilized antibody. Please refer to the reconstitution instruction card in the package.



Size: 100ul or 100ug lyophilized

Concentration: 1ug/uL

Host: Rabbit

Reactivities: Human, Mouse, Rat,

Application:

- FACS(1:100-500)
- IF(1:100-500)
- Not yet tested in other applications. Optimal working dilutions must be determined by the end user.

Antibody Type: Polyclonal

Isotype: IgG

Molecular Weight: 60kDa

Preservatives:

10ug/uL BSA and 0.1% NaN₃.

For research use only. CAUTION: Not for human or animal therapeutic or diagnostic use.

For full size images and description please click [HERE](#).