

## bs-0700R-A350

### • Rabbit Anti-NSBP1 Polyclonal Antibody, Alexa Fluor 350 conjugated

Conjugated Primary Antibodies

#### Background:

NSBP1 binds specifically to nuclear core particles and acts as a transcriptional activator. [Subcellular Location] Nucleus. [Tissue Specificity] Widely expressed with highest levels in submaxillary gland, thymus, kidney and liver and lowest levels in brain, lung, pancreas and eye. [Developmental Stage] Highest levels are found in 7-day-old embryos. Levels in the 7-day-old embryo are 4-fold higher than in the adult and almost 10-fold higher than in later embryonic stages. [SIMILARITY] Belongs to the HMGN family.

**Purification:** Was purified by Protein A and peptide affinity chromatography.

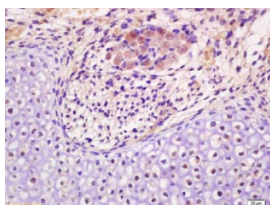
#### Storage:

Aqueous buffered solution containing 100ug/ml BSA, 50% glycerol and less than 0.09% sodium azide. Store at -20°C for 12 months. Protect from light. [Product without BSA and/or sodium azide is available for special order.]

#### Reconstitution:

If the antibody is in liquid form, no reconstitution needed.

Reconstitution is only required for the lyophilized antibody. Please refer to the reconstitution instruction card in the package.



For full size images and description please click [HERE](#).

**Size:** 100ul

**Concentration:** 1ug/uL

**Host:** Rabbit

**Reactivities:** Human,

**Application:**

- IF(1:100-500)
- Not yet tested in other applications. Optimal working dilutions must be determined by the end user.

**Antibody Type:** Polyclonal

**Isotype:** IgG

**Molecular Weight:** 45kDa

**Note:**

For research use only. CAUTION: Not for human or animal therapeutic or diagnostic use.