

bs-0700R-PE

• Rabbit Anti-NSBP1 Polyclonal Antibody, PE conjugated

Conjugated Primary Antibodies

Background:

NSBP1 binds specifically to nuclear core particles and acts as a transcriptional activator. [Subcellular Location] Nucleus. [Tissue Specificity] Widely expressed with highest levels in submaxillary gland, thymus, kidney and liver and lowest levels in brain, lung, pancreas and eye. [Developmental Stage] Highest levels are found in 7-day-old embryos. Levels in the 7-day-old embryo are 4-fold higher than in the adult and almost 10-fold higher than in later embryonic stages. [SIMILARITY] Belongs to the HMGN family.

Purification: Was purified by Protein A and peptide affinity chromatography.

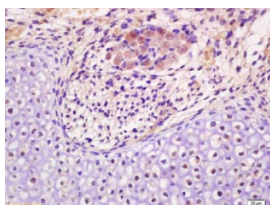
Storage:

Aqueous buffered solution containing 100ug/ml BSA, 50% glycerol and less than 0.09% sodium azide. Store at -20°C for 12 months. Protect from light. [Product without BSA and/or sodium azide is available for special order.]

Reconstitution:

If the antibody is in liquid form, no reconstitution needed.

Reconstitution is only required for the lyophilized antibody. Please refer to the reconstitution instruction card in the package.



For full size images and description please click [HERE](#).

Size: 100ul

Concentration: 1ug/uL

Host: Rabbit

Reactivities: Human,

Application:

- IF(1:100-500)
- Not yet tested in other applications. Optimal working dilutions must be determined by the end user.

Antibody Type: Polyclonal

Isotype: IgG

Molecular Weight: 45kDa

Note:

For research use only. CAUTION: Not for human or animal therapeutic or diagnostic use.