

• Rabbit Anti-CD4 Polyclonal Antibody

Primary Antibodies

Background:

The CD4 antigen is highly expressed on human T helper cells and thymocytes, and at lower levels on monocytes and dendritic cells. This integral membrane glycoprotein of approximately 58 kDa contains four external domains (D1 to D4) that show homology to members of the immunoglobulin (Ig) superfamily. It is responsible for the recognition of the MHC class II antigen. The CD4 antibody recognizes most thymocytes and about 65% of peripheral blood T cells.

Source/Purification:

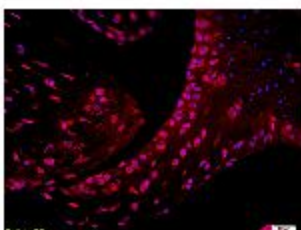
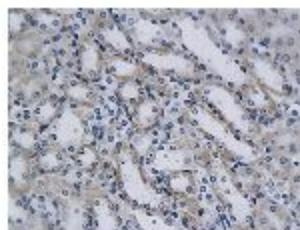
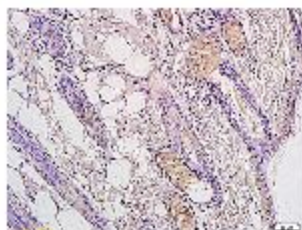
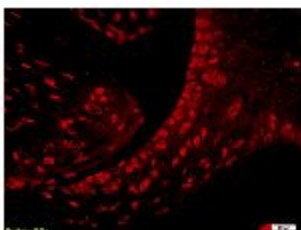
KLH conjugated synthetic peptide derived from the middle of mouse CD4. Was purified by Protein A and peptide affinity chromatography.

Storage: Prepared as lyophilized powder or liquid and shipped on ice. Store at -20°C for one year.

Reconstitution:

If the antibody is in liquid form, no reconstitution needed.

Reconstitution is only required for the lyophilized antibody. Please refer to the reconstitution instruction card in the package.



Size: 100ul or 100ug lyophilized

Concentration: 1ug/ul

Host: Rabbit

Reactivities: Mouse,Rat,

Application:

- WB(1:100-500)
- ELISA(1:500-1000)
- IP(1:20-100)
- IHC-P(1:100-500)
- IHC-F(1:100-500)
- FACS(1:100-500)
- IF(1:100-500)
- Not yet tested in other applications.
Optimal working dilutions must be determined by the end user.

Antibody Type: Polyclonal

Isotype: IgG

Molecular Weight: 48kDa

Preservatives:

10ug/ul BSA and 0.1% NaN₃.

For research use only. CAUTION: Not for human or animal therapeutic or diagnostic use.