

bs-0791R

• Rabbit Anti-CGRP/CGRP2 Polyclonal Antibody

Primary Antibodies

Background:

CGRP is present in C-cells of the thyroid and in central and peripheral nerves. CGRP has several important physiologic roles: it is a potent vasodilator, and can affect the force and rate of heart beat; it can modulate acetylcholine receptor function at the neuromuscular junction; it has been demonstrated to block tolerance to morphine; and it can modulate antigen presentation in Langerhans cells in the skin. Despite these important physiologic functions, therapeutic strategies using CGRP have been impeded due to the lack of a cloned CGRP receptor with which ligands could be developed.

Source/Purification:

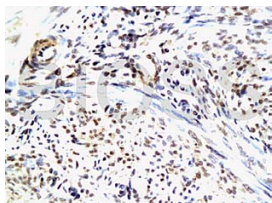
KLH conjugated synthetic peptide derived from human CGRP. Was purified by Protein A and peptide affinity chromatography.

Storage: Prepared as lyophilized powder or liquid and shipped on ice. Store at -20°C for one year.

Reconstitution:

If the antibody is in liquid form, no reconstitution needed.

Reconstitution is only required for the lyophilized antibody. Please refer to the reconstitution instruction card in the package.



For full size images and description please click [HERE](#).

Size: 100ul or 100ug lyophilized

Concentration: 1ug/uL

Host: Rabbit

Reactivities:

Human, Mouse, Rat, Chicken, Pig, Cow,

Application:

- ELISA(1:500-1000)
- IP(1:20-100)
- IHC-P(1:100-500)
- IHC-F(1:100-500)
- IF(1:100-500)
- Not yet tested in other applications.
Optimal working dilutions must be determined by the end user.

Antibody Type: Polyclonal

Isotype: IgG

Molecular Weight: 5/14kDa

Preservatives:

10ug/uL BSA and 0.1% NaN₃.

For research use only. CAUTION: Not for human or animal therapeutic or diagnostic use.