

• Rabbit Anti-phospho-AKT/PKB(Ser473) Polyclonal Antibody

Primary Antibodies

Background:

AKT, also known as protein kinase B (PKB), is a 57 kDa serine/threonine protein kinase. There are three mammalian isoforms of Akt: AKT1 (PKB alpha), AKT2 (PKB beta) and AKT3 (PKB gamma) with AKT2 and AKT3 being approximately 82% identical with the AKT1 isoform. Each isoform has a pleckstrin homology (PH) domain, a kinase domain and a carboxy terminal regulatory domain. AKT was originally cloned from the retrovirus AKT8, and is a key regulator of many signal transduction pathways. Its tight control over cell proliferation and cell viability are manifold; overexpression or inappropriate activation of AKT has been seen in many types of cancer. AKT mediates many of the downstream events of phosphatidylinositol 3 kinase (a lipid kinase activated by growth factors, cytokines and insulin). PI3 kinase recruits AKT to the membrane, where it is activated by PDK1 phosphorylation. Once phosphorylated, AKT dissociates from the membrane and phosphorylates targets in the cytoplasm and the cell nucleus.

Source/Purification:

KLH conjugated Synthesised phosphopeptide derived from human AKT around the phosphorylation site of Ser473. Was purified by Protein A and peptide affinity chromatography.

Modification Site:

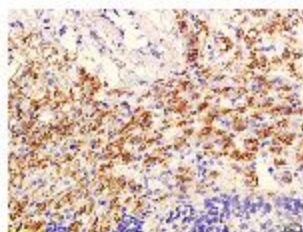
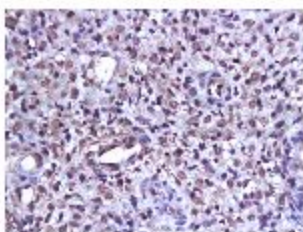
Ser473

Storage: Prepared as lyophilized powder or liquid and shipped on ice. Store at -20°C for one year.

Reconstitution:

If the antibody is in liquid form, no reconstitution needed.

Reconstitution is only required for the lyophilized antibody. Please refer to the reconstitution instruction card in the package.



Size: 100ul or 100ug lyophilized

Concentration: 1ug/ul

Host: Rabbit

Reactivities:

Human, Mouse, Rat, Chicken, Dog, Pig, Cow, Rabbit, Sheep,

Application:

- WB(1:100-500)
- ELISA(1:500-1000)
- IP(1:20-100)
- IHC-P(1:100-500)
- IHC-F(1:100-500)
- FACS(1:100-500)
- IF(1:100-500)
- Not yet tested in other applications. Optimal working dilutions must be determined by the end user.

Antibody Type: Polyclonal

Isotype: IgG

Molecular Weight: 56kDa

Preservatives: 10ug/uL BSA and 0.1% NaN₃.

For research use only. CAUTION: Not for human or animal therapeutic or diagnostic use.