

## • Rabbit Anti-CK4 Polyclonal Antibody

### Primary Antibodies

#### Background:

CK4 (Keratin, type II cytoskeletal 4; CK-4; Keratin-4; K4; Cytoskeletal 57 kDa keratin) is a member of the keratin gene family. The type II cytokeratins consist of basic or neutral proteins which are arranged in pairs of heterotypic keratin chains coexpressed during differentiation of simple and stratified epithelial tissues. This type II cytokeratin is specifically expressed in differentiated layers of the mucosal and esophageal epithelia with family member KRT13. Mutations in these genes have been associated with White Sponge Nevus, characterized by oral, esophageal, and anal leukoplakia. The type II cytokeratins are clustered in a region of chromosome 12q12-q13. Belongs to the intermediate filament family.

#### Source/Purification:

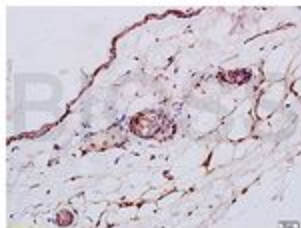
KLH conjugated synthetic peptide derived from human CK4 C-terminus. Was purified by Protein A and peptide affinity chromatography.

**Storage:** Prepared as lyophilized powder or liquid and shipped on ice. Store at -20°C for one year.

#### Reconstitution:

If the antibody is in liquid form, no reconstitution needed.

Reconstitution is only required for the lyophilized antibody. Please refer to the reconstitution instruction card in the package.



**Size:** 100ul or 100ug lyophilized

**Concentration:** 1ug/uL

**Host:** Rabbit

#### Reactivities:

Human, Mouse, Rat, Dog, Cow, Horse, Rabbit,

#### Application:

- WB(1:100-500)
- ELISA(1:500-1000)
- IP(1:20-100)
- IHC-P(1:100-500)
- IHC-F(1:100-500)
- IF(1:100-500)
- Not yet tested in other applications.  
Optimal working dilutions must be determined by the end user.

**Antibody Type:** Polyclonal

**Isotype:** IgG

**Molecular Weight:** 57kDa

#### Preservatives:

10ug/uL BSA and 0.1% NaN<sub>3</sub>.

For research use only. CAUTION: Not for human or animal therapeutic or diagnostic use.