

- Rabbit Anti-CD11b/Integrin α M/Integrin Alpha M Polyclonal Antibody**

Primary Antibodies

Background:

CD11b is implicated in various adhesive interactions of monocytes, macrophages and granulocytes as well as in mediating the uptake of complement coated particles. It is identical to CR3, the receptor for the iC3b fragment of the third complement component. It probably recognizes the RGD peptide in C3b. CD11b is also a receptor for fibrinogen, factor X and ICAM1. It recognizes P1 and P2 peptides of fibrinogen gamma chain. The Mac1 CD11b antigen is present on macrophages, granulocytes, natural killer cells, blood monocytes. CD11b is expressed on 8% spleen cells, 44% bone marrow cells and less than 1% of thymocytes and is commonly used as a microglial marker in nervous tissue.

Source/Purification:

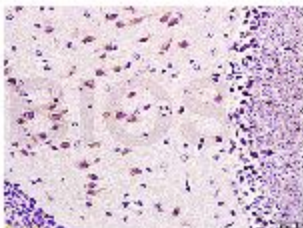
KLH conjugated synthetic peptide derived from human C-terminus. Was purified by Protein A and peptide affinity chromatography.

Storage: Prepared as lyophilized powder or liquid and shipped on ice. Store at -20°C for one year.

Reconstitution:

If the antibody is in liquid form, no reconstitution needed.

Reconstitution is only required for the lyophilized antibody. Please refer to the reconstitution instruction card in the package.



Size: 100ul or 100ug lyophilized

Concentration: 1ug/uL

Host: Rabbit

Reactivities: Human, Mouse, Rat, Pig,

Application:

- WB(1:100-500)
- ELISA(1:500-1000)
- IP(1:20-100)
- IHC-P(1:100-500)
- IHC-F(1:100-500)
- IF(1:100-500)
- Not yet tested in other applications.
Optimal working dilutions must be determined by the end user.

Antibody Type: Polyclonal

Isotype: IgG

Molecular Weight: 125kDa

Preservatives:

10ug/uL BSA and 0.1% NaN₃.

For research use only. CAUTION: Not for human or animal therapeutic or diagnostic use.