

- Rabbit Anti-MEK1/2(MAPKK1) Polyclonal Antibody**

Primary Antibodies

**Background:**

The protein encoded by this gene is a member of the dual specificity protein kinase family, which acts as a mitogen-activated protein (MAP) kinase kinase. MAP kinases, also known as extracellular signal-regulated kinases (ERKs), act as an integration point for multiple biochemical signals. This protein kinase lies upstream of MAP kinases and stimulates the enzymatic activity of MAP kinases upon wide variety of extra- and intracellular signals. As an essential component of MAP kinase signal transduction pathway, this kinase is involved in many cellular processes such as proliferation, differentiation, transcription regulation and development.

**Source/Purification:**

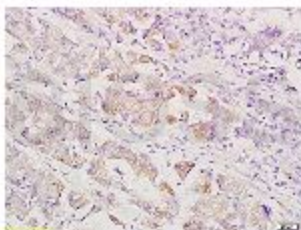
KLH conjugated synthetic peptide derived from human MAPKK1 C-terminus. Was purified by Protein A and peptide affinity chromatography.

**Storage:** Prepared as lyophilized powder or liquid and shipped on ice. Store at -20°C for one year.

**Reconstitution:**

If the antibody is in liquid form, no reconstitution needed.

Reconstitution is only required for the lyophilized antibody. Please refer to the reconstitution instruction card in the package.



**Size:** 100ul or 100ug lyophilized

**Concentration:** 1ug/uL

**Host:** Rabbit

**Reactivities:**

Human, Mouse, Rat, Chicken, Dog, Pig, Cow, Rabbit,

**Application:**

- WB(1:100-500)
- ELISA(1:500-1000)
- IP(1:20-100)
- IHC-P(1:100-500)
- IHC-F(1:100-500)
- IF(1:100-500)
- Not yet tested in other applications.  
Optimal working dilutions must be determined by the end user.

**Antibody Type:** Polyclonal

**Isotype:** IgG

**Molecular Weight:** 43kDa

**Preservatives:**

10ug/uL BSA and 0.1% NaN3.

For research use only. CAUTION: Not for human or animal therapeutic or diagnostic use.