

• Rabbit Anti-T Beta 10 Polyclonal Antibody

Primary Antibodies

Background:

The beta thymosins are a family of related peptides, initially isolated from calf thymus but known to be present in a wide variety of mammalian and other vertebrate cells and tissues. Thymosin beta 4 was the first member of the family to be characterized. Although TMSB4 was initially proposed to be a thymic hormone acting at early stages of T cell maturation, the high concentration of the protein and its mRNA in a number of other tissues and cells, as well as the lack of an identifiable secretory signal sequence, suggested that it had a general function in many cell types. Thymosin beta 10 is closely related in sequence to TMSB4 and is also an actin sequestering protein.

Source/Purification:

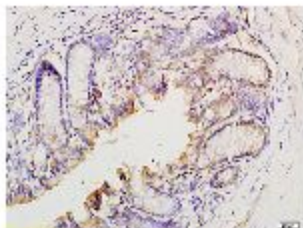
KLH conjugated synthetic peptide derived from human T Beta 10. Was purified by Protein A and peptide affinity chromatography.

Storage: Prepared as lyophilized powder or liquid and shipped on ice. Store at -20°C for one year.

Reconstitution:

If the antibody is in liquid form, no reconstitution needed.

Reconstitution is only required for the lyophilized antibody. Please refer to the reconstitution instruction card in the package.



Size: 100ul or 100ug lyophilized

Concentration: 1ug/uL

Host: Rabbit

Reactivities: Human, Mouse, Rat,

Application:

- ELISA(1:500-1000)
- IHC-P(1:100-500)
- IHC-F(1:100-500)
- IF(1:100-500)
- Not yet tested in other applications.
Optimal working dilutions must be determined by the end user.

Antibody Type: Polyclonal

Isotype: IgG

Molecular Weight: 4.9kDa

Preservatives:

10ug/uL BSA and 0.1% NaN3.

For research use only. CAUTION: Not for human or animal therapeutic or diagnostic use.