

- Rabbit Anti-Gastrin Polyclonal Antibody**

Primary Antibodies

Background:

Gastrin is mainly known by its first described role as a gastric acid-hormone but the protein also has the ability to promote cellular growth. More recently, gastrin has been suggested to induce leukocyte-endothelial cell interactions and to have a pro-inflammatory effect. Gastrin has two biologically active peptide forms, G34 and G17 and they activate two different receptors: the CCK-1 receptor, which has low affinity for gastrin but high affinity for the related hormone cholecystokinin (CCK), and the CCK-2 receptor, which has high affinity for both gastrin and CCK and mediates the acid-secretory as well as the proliferative effects of gastrin.

Source/Purification:

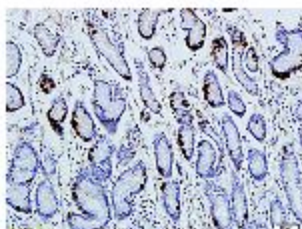
KLH conjugated synthetic peptide derived from human Gastrin. Was purified by Protein A and peptide affinity chromatography.

Storage: Prepared as lyophilized powder or liquid and shipped on ice. Store at -20°C for one year.

Reconstitution:

If the antibody is in liquid form, no reconstitution needed.

Reconstitution is only required for the lyophilized antibody. Please refer to the reconstitution instruction card in the package.



Size: 100ul or 100ug lyophilized

Concentration: 1ug/uL

Host: Rabbit

Reactivities:

Human, Mouse, Rat, Pig, Rabbit,

Application:

- WB(1:100-500)
- ELISA(1:500-1000)
- IP(1:20-100)
- IHC-P(1:100-500)
- IHC-F(1:100-500)
- IF(1:100-500)
- Not yet tested in other applications.
Optimal working dilutions must be determined by the end user.

Antibody Type: Polyclonal

Isotype: IgG

Molecular Weight: 11kDa

Preservatives:

10ug/uL BSA and 0.1% NaN₃.

For research use only. CAUTION: Not for human or animal therapeutic or diagnostic use.