

## • Rabbit Anti-CD14 Polyclonal Antibody

### Primary Antibodies

#### Background:

CD14 is a single copy gene encoding 2 protein forms: a 50 to 55 kDa glycosylphosphatidylinositol anchored membrane protein (mCD14) and a monocyte or liver derived soluble serum protein (sCD14) that lacks the anchor. Both molecules are critical for lipopolysaccharide (LPS) dependent signal transduction, and sCD14 confers LPS sensitivity to cells lacking mCD14. Increased sCD14 levels are associated with inflammatory infectious diseases and high mortality in gram negative shock. CD14 also appears to be involved in clearance of gram-negative bacteria via its high affinity binding to LPS-LPB complexes.

#### Source/Purification:

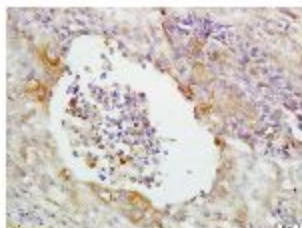
KLH conjugated synthetic peptide derived from mouse CD14 C-terminus. Was purified by Protein A and peptide affinity chromatography.

**Storage:** Prepared as lyophilized powder or liquid and shipped on ice. Store at -20°C for one year.

#### Reconstitution:

If the antibody is in liquid form, no reconstitution needed.

Reconstitution is only required for the lyophilized antibody. Please refer to the reconstitution instruction card in the package.



**Size:** 100ul or 100ug lyophilized

**Concentration:** 1ug/uL

**Host:** Rabbit

#### Reactivities:

Human, Mouse, Rat, Dog, Pig, Cow, Rabbit, Sheep,

#### Application:

- WB(1:100-500)
- ELISA(1:500-1000)
- IP(1:20-100)
- IHC-P(1:100-500)
- IHC-F(1:100-500)
- IF(1:100-500)
- Not yet tested in other applications.  
Optimal working dilutions must be determined by the end user.

**Antibody Type:** Polyclonal

**Isotype:** IgG

**Molecular Weight:** 40kDa

#### Preservatives:

10ug/uL BSA and 0.1% NaN<sub>3</sub>.

For research use only. CAUTION: Not for human or animal therapeutic or diagnostic use.