

• Rabbit Anti-GRK2/BARK1/ADRBK1 Polyclonal Antibody

Primary Antibodies

Background:

The product of this gene phosphorylates the beta-2-adrenergic receptor and appears to mediate agonist-specific desensitization observed at high agonist concentrations. This protein is an ubiquitous cytosolic enzyme that specifically phosphorylates the activated form of the beta-adrenergic and related G-protein-coupled receptors. Abnormal coupling of beta-adrenergic receptor to G protein is involved in the pathogenesis of the failing heart. [provided by RefSeq].

Source/Purification:

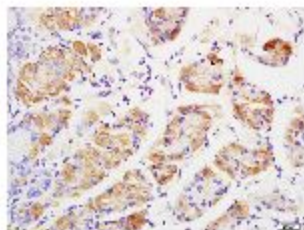
KLH conjugated synthetic peptide derived from human GRK2. Was purified by Protein A and peptide affinity chromatography.

Storage: Prepared as lyophilized powder or liquid and shipped on ice. Store at -20°C for one year.

Reconstitution:

If the antibody is in liquid form, no reconstitution needed.

Reconstitution is only required for the lyophilized antibody. Please refer to the reconstitution instruction card in the package.



Size: 100ul or 100ug lyophilized

Concentration: 1ug/uL

Host: Rabbit

Reactivities:

Human, Mouse, Rat, Chicken, Dog, Pig, Cow, Guinea Pig,

Application:

- WB(1:100-500)
 - ELISA(1:500-1000)
 - IP(1:20-100)
 - IHC-P(1:100-500)
 - IHC-F(1:100-500)
 - IF(1:100-500)
 - Not yet tested in other applications.
- Optimal working dilutions must be determined by the end user.

Antibody Type: Polyclonal

Isotype: IgG

Molecular Weight: 76kDa

Preservatives:

10ug/uL BSA and 0.1% NaN₃.

For research use only. CAUTION: Not for human or animal therapeutic or diagnostic use.