

bs-1251R-HRP

• Rabbit Anti-CD166 Polyclonal Antibody, HRP conjugated

Conjugated Primary Antibodies

Background:

CD166 is a member of the Ig superfamily and is expressed on activated T-cells, B cells and other cells including thymic epithelial cells, fibroblasts, keratinocytes and neurons. CD6 has been identified as a receptor for CD166. The expression of CD166 is up-regulated in low-grade prostate tumors and down-regulated in high-grade tumors; may play role in progression of prostate cancer.

Purification: Was purified by Protein A and peptide affinity chromatography.

Storage:

Aqueous buffered solution containing 100ug/ml BSA, 50% glycerol and less than 0.01% Gentamicin. Store at -20°C for 12 months. [Product without BSA and/or Gentamicin is available for special order.]

Reconstitution:

If the antibody is in liquid form, no reconstitution needed.

Reconstitution is only required for the lyophilized antibody. Please refer to the reconstitution instruction card in the package.

Size: 100ul

Concentration: 1ug/uL

Host: Rabbit

Reactivities:

Human, Mouse, Rat, Chicken, Dog, Pig, Bovine, Rabbit,

Application:

- WB(1:100-500)
- ELISA(1:500-1000)
- IHC-P(1:100-500)
- Not yet tested in other applications.
Optimal working dilutions must be determined by the end user.

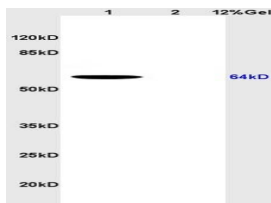
Antibody Type: Polyclonal

Isotype: IgG

Molecular Weight: 62kDa

Note:

For research use only. CAUTION: Not for human or animal therapeutic or diagnostic use.



For full size images and description please click [HERE](#).