

bs-1258R-FITC

• Rabbit Anti-ICAM-2/CD102 Polyclonal Antibody, FITC conjugated

Conjugated Primary Antibodies

Background:

ICAM2 is a member of the intercellular adhesion molecule (ICAM) family. All ICAM proteins are type I transmembrane glycoproteins, contain 2-9 immunoglobulin like C2 type domains, and bind to the leukocyte adhesion LFA1 protein. This protein may play a role in lymphocyte recirculation by blocking LFA1 dependent cell adhesion. It mediates adhesive interactions important for antigen specific immune response, NK cell mediated clearance, lymphocyte recirculation, and other cellular interactions important for immune response and surveillance.

Purification: Was purified by Protein A and peptide affinity chromatography.

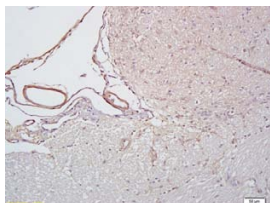
Storage:

Aqueous buffered solution containing 100ug/ml BSA, 50% glycerol and less than 0.09% sodium azide. Store at -20°C for 12 months. Protect from light. [Product without BSA and/or sodium azide is available for special order.]

Reconstitution:

If the antibody is in liquid form, no reconstitution needed.

Reconstitution is only required for the lyophilized antibody. Please refer to the reconstitution instruction card in the package.



For full size images and description please click [HERE](#).

Size: 100ul

Concentration: 1ug/uL

Host: Rabbit

Reactivities: Human, Mouse, Rat,

Application:

- IF (1:100-500)
- Not yet tested in other applications. Optimal working dilutions must be determined by the end user.

Antibody Type: Polyclonal

Isotype: IgG

Molecular Weight: 28kDa

Note:

For research use only. CAUTION: Not for human or animal therapeutic or diagnostic use.