

## • Rabbit Anti-Connexin-36 Polyclonal Antibody

### Primary Antibodies

#### Background:

Connexin-36(GJA9) is a member of the connexin gene family that is expressed predominantly in mammalian neurons. Connexins associate in groups of 6 and are organized radially around a central pore to form connexons. Each gap junction intercellular channel is formed by the conjunction of 2 connexons.

#### Source/Purification:

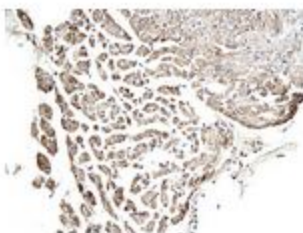
KLH conjugated synthetic peptide derived from human Connexin-36 C-terminus. Was purified by Protein A and peptide affinity chromatography.

**Storage:** Prepared as lyophilized powder or liquid and shipped on ice. Store at -20°C for one year.

#### Reconstitution:

If the antibody is in liquid form, no reconstitution needed.

Reconstitution is only required for the lyophilized antibody. Please refer to the reconstitution instruction card in the package.



**Size:** 100ul or 100ug lyophilized

**Concentration:** 1ug/uL

**Host:** Rabbit

#### Reactivities:

Human, Mouse, Rat, Dog, Pig, Cow, Horse, Rabbit, Guinea Pig,

#### Application:

- WB(1:100-500)
- ELISA(1:500-1000)
- IP(1:20-100)
- IHC-P(1:100-500)
- IHC-F(1:100-500)
- IF(1:100-500)
- Not yet tested in other applications. Optimal working dilutions must be determined by the end user.

**Antibody Type:** Polyclonal

**Isotype:** IgG

**Molecular Weight:** 38kDa

**Preservatives:** 10ug/uL BSA and 0.1% NaN<sub>3</sub>.

For research use only. CAUTION: Not for human or animal therapeutic or diagnostic use.