

• Rabbit Anti-CD28 Polyclonal Antibody

Primary Antibodies

Background:

Involved in T-cell activation, the induction of cell proliferation and cytokine production and promotion of T-cell survival. SUBUNIT: Homodimer; disulfide-linked. Interacts with DUSP14. Binds to CD80/B7-1 and CD86/B7-2/B70. SUBCELLULAR LOCATION: Membrane; Single-pass type I membrane protein. TISSUE SPECIFICITY: Expressed in T-cells and plasma cells, but not in less mature B-cells. Human CD28 antigen is a 44 kDa disulfide linked homodimeric T cell specific surface glycoprotein. It is a cell adhesion molecule of the immunoglobulin superfamily which is constitutively expressed on most peripheral blood T lymphocytes (approximately 95% of CD4+ cells and 50% of CD8+ cells). Mature thymocytes exhibit higher levels of CD28 than the immature cells. Activation of T cells results in enhanced CD28 expression. T cell activation requires two combined signals provided by antigen presenting cells. The first is mediated via the T cell receptor following its interaction with antigenic peptide MHC complexes, and the second is delivered by accessory or costimulating molecules through their counter receptors on T lymphocytes. CD28 bears structural homology to CTLA 4 which is expressed at very low levels on the surface of CD4+ and CD8+ peripheral blood cells only following activation. CD28 is the natural receptor for the B7/BB 1 ligand (CD80) a 55-60 kDa glycoprotein which is expressed on activated B lymphocytes, on dendritic cells and on interferon gamma treated monocytes. The binding of B7 1/BB 1 molecules to CD28 is involved in T lymphocyte activation and in the initiation and maintenance of chronic inflammation.. 22日 登 记 0.1mg20支【YSL22W】 Classical swine fever virus, CSFV

Source/Purification:

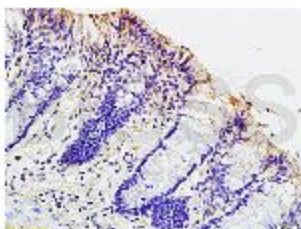
KLH conjugated synthetic peptide derived from mouse CD28 N-terminus. Was purified by Protein A and peptide affinity chromatography.

Storage: Prepared as lyophilized powder or liquid and shipped on ice. Store at -20°C for one year.

Reconstitution:

If the antibody is in liquid form, no reconstitution needed.

Reconstitution is only required for the lyophilized antibody. Please refer to the reconstitution instruction card in the package.



Size: 100ul or 100ug lyophilized

Concentration: 1ug/ul

Host: Rabbit

Reactivities:

Human, Mouse, Rat, Chicken, Dog, Pig, Cow, Horse,

Application:

- WB(1:100-500)
 - ELISA(1:500-1000)
 - IP(1:20-100)
 - IHC-P(1:100-500)
 - IHC-F(1:100-500)
 - FACS(1:100-500)
 - IF(1:100-500)
 - Not yet tested in other applications.
- Optimal working dilutions must be determined by the end user.

Antibody Type: Polyclonal

Isotype: IgG

Molecular Weight: 22kDa

Preservatives:

10ug/uL BSA and 0.1% NaN3.

For research use only. CAUTION: Not for human or animal therapeutic or diagnostic use.