

• Rabbit Anti-Metallothionein Polyclonal Antibody

Primary Antibodies

Background:

Metallothioneins (MTs) are a family of low molecular weight, heavy metal-binding proteins characterized by a high cysteine content and lack of aromatic amino acids. MTs bind 7 to 12 heavy metal atoms per molecule of protein. They are ubiquitous in the animal and plant kingdoms and are also found in prokaryotes. In mammals, the cysteine residues are absolutely conserved and serve to coordinate heavy metal atoms such as zinc, cadmium, and copper via mercaptide linkages.

Source/Purification:

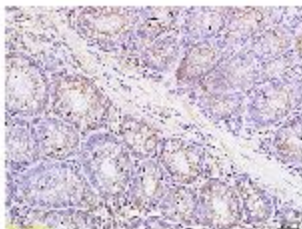
KLH conjugated synthetic peptide derived from human metallothionein. Was purified by Protein A and peptide affinity chromatography.

Storage: Prepared as lyophilized powder or liquid and shipped on ice. Store at -20°C for one year.

Reconstitution:

If the antibody is in liquid form, no reconstitution needed.

Reconstitution is only required for the lyophilized antibody. Please refer to the reconstitution instruction card in the package.



Size: 100ul or 100ug lyophilized

Concentration: 1ug/uL

Host: Rabbit

Reactivities: Human, Mouse, Rat,

Application:

- WB(1:100-500)
- ELISA(1:500-1000)
- IP(1:20-100)
- IHC-P(1:100-500)
- IHC-F(1:100-500)
- IF(1:100-500)
- Not yet tested in other applications.
Optimal working dilutions must be determined by the end user.

Antibody Type: Polyclonal

Isotype: IgG

Molecular Weight: 15kDa

Preservatives:

10ug/uL BSA and 0.1% NaN₃.

For research use only. CAUTION: Not for human or animal therapeutic or diagnostic use.