

• **Rabbit Anti-WNK3 protein Polyclonal Antibody, Gold conjugated**

Conjugated Primary Antibodies

Background:

WNK3 (WNK lysine deficient protein kinase 3) belongs to the serine/threonine protein kinase family. It lacks the almost invariant catalytic lysine in subdomain II, which is important for binding ATP in the catalytic site. A conserved lysine in subdomain I is thought to provide this function. WNK3 activates Na-(K)-Cl cotransporters by increasing their phosphorylation and appears to be a crucial component of the kinase/phosphatase signaling pathway that coordinately regulates the Cl- influx and efflux branches of the SLC12A cotransporter family.

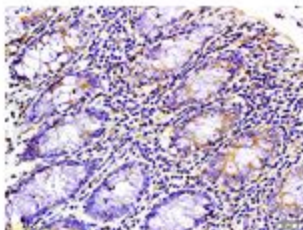
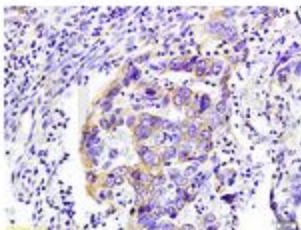
Purification: Was purified by Protein A and peptide affinity chromatography.

Storage: Prepared as lyophilized powder or liquid and shipped on ice. Store at -20°C for one year.

Reconstitution:

If the antibody is in liquid form, no reconstitution needed.

Reconstitution is only required for the lyophilized antibody. Please refer to the reconstitution instruction card in the package.



Size: 100ul or 100ug lyophilized

Concentration: 1ug/uL

Host: Rabbit

Reactivities:

Human, Mouse, Rat, Cow, Rabbit,

Application:

- Electron Microscopy
- Not yet tested in other applications.
Optimal working dilutions must be determined by the end user.

Antibody Type: Polyclonal

Isotype: IgG

Molecular Weight: 198kDa

Preservatives:

10ug/uL BSA and 0.1% NaN3.

For research use only. CAUTION: Not for human or animal therapeutic or diagnostic use.