

• **Rabbit Anti-WNK3 protein Polyclonal Antibody**

Primary Antibodies

**Background:**

WNK3 (WNK lysine deficient protein kinase 3) belongs to the serine/threonine protein kinase family. It lacks the almost invariant catalytic lysine in subdomain II, which is important for binding ATP in the catalytic site. A conserved lysine in subdomain I is thought to provide this function. WNK3 activates Na-(K)-Cl cotransporters by increasing their phosphorylation and appears to be a crucial component of the kinase/phosphatase signaling pathway that coordinately regulates the Cl- influx and efflux branches of the SLC12A cotransporter family.

**Source/Purification:**

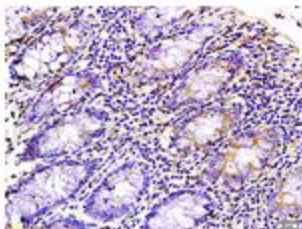
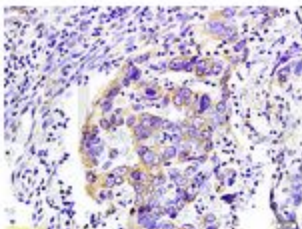
KLH conjugated synthetic peptide derived from human WNK3 protein. Was purified by Protein A and peptide affinity chromatography.

**Storage:** Prepared as lyophilized powder or liquid and shipped on ice. Store at -20°C for one year.

**Reconstitution:**

If the antibody is in liquid form, no reconstitution needed.

Reconstitution is only required for the lyophilized antibody. Please refer to the reconstitution instruction card in the package.



**Size:** 100ul or 100ug lyophilized

**Concentration:** 1ug/uL

**Host:** Rabbit

**Reactivities:**

Human, Mouse, Rat, Cow, Rabbit,

**Application:**

- WB(1:100-500)
- ELISA(1:500-1000)
- IP(1:20-100)
- IHC-P(1:100-500)
- IHC-F(1:100-500)
- IF(1:100-500)
- Not yet tested in other applications.  
Optimal working dilutions must be determined by the end user.

**Antibody Type:** Polyclonal

**Isotype:** IgG

**Molecular Weight:** 198kDa

**Preservatives:**

10ug/uL BSA and 0.1% NaN3.

For research use only. CAUTION: Not for human or animal therapeutic or diagnostic use.