

bs-1948R

• Rabbit Anti-WNT5A Polyclonal Antibody

Primary Antibodies

Background:

Wnt proteins form a family of highly conserved secreted signaling molecules that regulate cell-to-cell interactions during embryogenesis. Wnt genes and Wnt signaling are also implicated in cancer. Insights into the mechanisms of Wnt action have emerged from several systems: genetics in *Drosophila* and *Caenorhabditis elegans*; biochemistry in cell culture and ectopic gene expression in *Xenopus* embryos. Many Wnt genes in the mouse have been mutated, leading to very specific developmental defects. As currently understood, Wnt proteins bind to receptors of the Frizzled and LRP families on the cell surface. Through several cytoplasmic relay components, the signal is transduced to β -catenin, which then enters the nucleus and forms a complex with TCF to activate transcription of Wnt target genes.

Source/Purification:

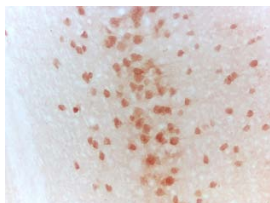
KLH conjugated synthetic peptide derived from human WNT5A C-terminus. Was purified by Protein A and peptide affinity chromatography.

Storage: Prepared as lyophilized powder or liquid and shipped on ice. Store at -20°C for one year.

Reconstitution:

If the antibody is in liquid form, no reconstitution needed.

Reconstitution is only required for the lyophilized antibody. Please refer to the reconstitution instruction card in the package.



For full size images and description please click [HERE](#).

Size: 100ul or 100ug lyophilized

Concentration: 1ug/uL

Host: Rabbit

Reactivities:

Human, Mouse, Rat, Pig, Cow, Rabbit,

Application:

- WB(1:100-500)
- ELISA(1:500-1000)
- IP(1:20-100)
- IHC-P(1:100-500)
- IHC-F(1:100-500)
- IF(1:100-500)
- Not yet tested in other applications. Optimal working dilutions must be determined by the end user.

Antibody Type: Polyclonal

Isotype: IgG

Molecular Weight: 35kDa

Preservatives:

10ug/uL BSA and 0.1% NaN₃.

For research use only. CAUTION: Not for human or animal therapeutic or diagnostic use.