

• Rabbit Anti-MIP4/CCL18 Polyclonal Antibody

Primary Antibodies

Background:

This chemotactic factor that attracts lymphocytes but not monocytes or granulocytes may be involved in B cell migration into B cell follicles in lymph nodes. It attracts naive T lymphocytes toward dendritic cells and activated macrophages in lymph nodes, has chemotactic activity for naive T cells, CD4+ and CD8+ T cells and thus may play a role in both humoral and cell-mediated immunity responses. It is expressed at high levels in lung, lymph nodes, placenta, and bone marrow, not expressed by peripheral blood monocytes, and a monocyte-to-macrophage differentiation is a prerequisite for expression. Specifically induced in macrophages by IL4, IL13, and IL10, it belongs to the intercrine beta (chemokine CC) family.

Source/Purification:

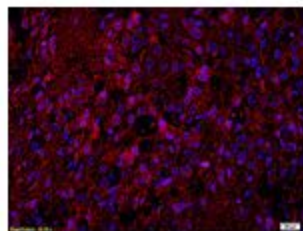
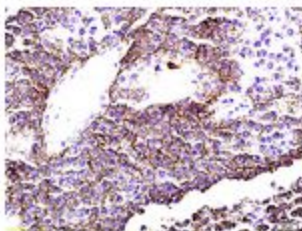
KLH conjugated synthetic peptide derived from human MIP4 C-terminus. Was purified by Protein A and peptide affinity chromatography.

Storage: Prepared as lyophilized powder or liquid and shipped on ice. Store at -20°C for one year.

Reconstitution:

If the antibody is in liquid form, no reconstitution needed.

Reconstitution is only required for the lyophilized antibody. Please refer to the reconstitution instruction card in the package.



Size: 100ul or 100ug lyophilized

Concentration: 1ug/uL

Host: Rabbit

Reactivities:

Human, Mouse, Rat, Dog, Pig, Cow,

Application:

- WB(1:100-500)
- ELISA(1:500-1000)
- IP(1:20-100)
- IHC-P(1:100-500)
- IHC-F(1:100-500)
- IF(1:100-500)
- Not yet tested in other applications.
Optimal working dilutions must be determined by the end user.

Antibody Type: Polyclonal

Isotype: IgG

Molecular Weight: 10kDa

Preservatives:

10ug/uL BSA and 0.1% NaN₃.

For research use only. CAUTION: Not for human or animal therapeutic or diagnostic use.