

## bs-2906R-PE

### • Rabbit Anti-Lyn Polyclonal Antibody, PE conjugated

Conjugated Primary Antibodies

#### Background:

Lyn (also known as p53/56 Lyn) is a membrane associated protein tyrosine kinase (PTK) mostly expressed in hemopoietic cells which is important in cellular signaling. It contains an SH2 and SH3 domain and has been found to be cleaved after activation of caspases in apoptosis. A member of the Src family of PTKs, there are two known isoforms for Lyn which plays an indispensable role in the Fc epsilon RI (FcεR1) and the B cell IgM receptor signaling pathway and is essential for Syk activation and Lat phosphorylation after FcεR1 aggregation and can also phosphorylate Tec on multiple residues. Lyn can also be regulated by IL2 and IL3.

**Purification:** Was purified by Protein A and peptide affinity chromatography.

#### Storage:

Aqueous buffered solution containing 100ug/ml BSA, 50% glycerol and less than 0.09% sodium azide. Store at -20°C for 12 months. Protect from light. [Product without BSA and/or sodium azide is available for special order.]

#### Reconstitution:

If the antibody is in liquid form, no reconstitution needed.

Reconstitution is only required for the lyophilized antibody. Please refer to the reconstitution instruction card in the package.

**Size:** 100ul

**Concentration:** 1ug/uL

**Host:** Rabbit

**Reactivities:**

Human, Mouse, Rat, Dog, Bovine, Rabbit, Sheep,

**Application:**

- IF(1:100-500)
- Not yet tested in other applications. Optimal working dilutions must be determined by the end user.

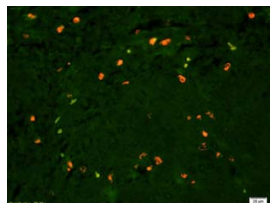
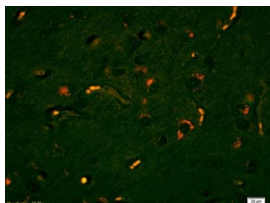
**Antibody Type:** Polyclonal

**Isotype:** IgG

**Molecular Weight:** 58kDa

**Note:**

For research use only. CAUTION: Not for human or animal therapeutic or diagnostic use.



For full size images and description please click [HERE](#).