

## • Rabbit Anti-MYOG/Myogenin Polyclonal Antibody

### Primary Antibodies

#### Background:

Myogenin is a member of a family of myogenic regulatory genes, which includes MyoD, myf5 and MRF4. These genes encode a set of transcription factors, which are essential for muscle development. Transfection of myogenin into multipotential mesodermal cells have been shown to convert the mesodermal cells to myoblasts. Expression of myogenin is restricted to cells of skeletal muscle origin. It is therefore a useful marker for tumors of the muscle lineage, being strongly expressed in alveolar rhabdomyosarcomas.

#### Source/Purification:

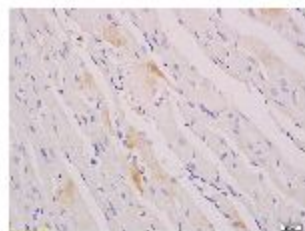
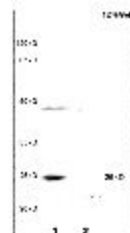
KLH conjugated synthetic peptide derived from human MYOG/Myogenin. Was purified by Protein A and peptide affinity chromatography.

**Storage:** Prepared as lyophilized powder or liquid and shipped on ice. Store at -20°C for one year.

#### Reconstitution:

If the antibody is in liquid form, no reconstitution needed.

Reconstitution is only required for the lyophilized antibody. Please refer to the reconstitution instruction card in the package.



**Size:** 100ul or 100ug lyophilized

**Concentration:** 1ug/uL

**Host:** Rabbit

#### Reactivities:

Human, Mouse, Rat, Chicken, Pig, Cow, Horse, Rabbit, Sheep,

#### Application:

- WB(1:100-500)
- ELISA(1:500-1000)
- IP(1:20-100)
- IHC-P(1:100-500)
- IHC-F(1:100-500)
- IF(1:100-500)
- Not yet tested in other applications. Optimal working dilutions must be determined by the end user.

**Antibody Type:** Polyclonal

**Isotype:** IgG

**Molecular Weight:** 25kDa

**Preservatives:** 10ug/uL BSA and 0.1% NaN3.

For research use only. CAUTION: Not for human or animal therapeutic or diagnostic use.