

## bs-4905R-HRP

### • Rabbit Anti-SORBS2 Polyclonal Antibody, HRP conjugated

Conjugated Primary Antibodies

#### Background:

SORBS2 is an adapter protein that plays a role in the assembling of signaling complexes, being a link between ABL kinases and actin cytoskeleton. It can form a complex with ABL1 and CBL, thus promoting ubiquitination and degradation of ABL1 or with AKT1 and PAK1, thus mediating AKT1-mediated activation of PAK1.

**Purification:** Was purified by Protein A and peptide affinity chromatography.

#### Storage:

Aqueous buffered solution containing 100ug/ml BSA, 50% glycerol and less than 0.01% Gentamicin. Store at -20°C for 12 months. [Product without BSA and/or Gentamicin is available for special order.]

#### Reconstitution:

If the antibody is in liquid form, no reconstitution needed.

Reconstitution is only required for the lyophilized antibody. Please refer to the reconstitution instruction card in the package.

**Size:** 100ul

**Concentration:** 1ug/uL

**Host:** Rabbit

**Reactivities:**

Human, Mouse, Rat, Chicken, Dog, Pig, Rabbit,

**Application:**

- WB(1:100-500)
- ELISA(1:500-1000)
- IHC-P(1:100-500)
- Not yet tested in other applications.  
Optimal working dilutions must be determined by the end user.

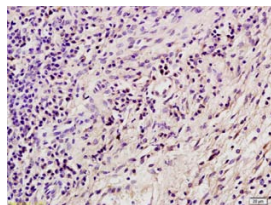
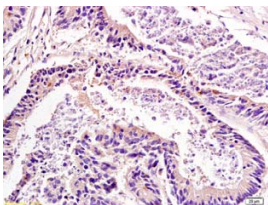
**Antibody Type:** Polyclonal

**Isotype:** IgG

**Molecular Weight:** 121kDa

**Note:**

For research use only. CAUTION: Not for human or animal therapeutic or diagnostic use.



For full size images and description please click [HERE](#).