

## bs-6319R-Cy7

### • Rabbit Anti-IL-1 Beta/IL-1B Polyclonal Antibody, Cy7 conjugated

Conjugated Primary Antibodies

#### Background:

Interleukin 1 (IL1), originally known as lymphocyte activating factor (LAF), activates T cells and lymphocytes, which then proliferate and secrete interleukin 2. IL1 is primarily released from stimulated macrophages and monocytes, but also is released from several other cell types, and is thought to play a key role in inflammatory and immune responses. The two closely related agents, interleukin1 alpha (IL1 alpha) and interleukin1 beta (IL1 beta) bind to the same cell surface receptor, elicit nearly identical biological responses and share 25% homology in their amino acid sequence.

**Purification:** Was purified by Protein A and peptide affinity chromatography.

#### Storage:

Prepared as lyophilized powder or liquid and shipped on ice. Store at -20°C for one year. Protect from light.

#### Reconstitution:

If the antibody is in liquid form, it is ready to use, no reconstitution needed.

Reconstitution is only required for the lyophilized antibody. Please refer to the reconstitution instruction card in the package.

**Size:** 100ul or 100ug lyophilized

**Concentration:** 1ug/uL

**Host:** Rabbit

**Reactivities:**

Human, Mouse, Rat, Dog, Horse, Rabbit,

**Application:**

- IF(1:100-500)
- Not yet tested in other applications. Optimal working dilutions must be determined by the end user.

**Antibody Type:** Polyclonal

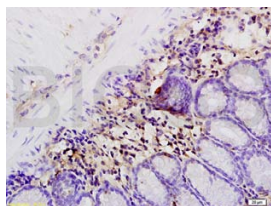
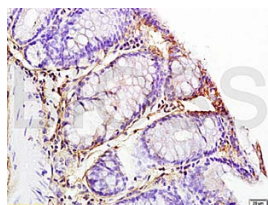
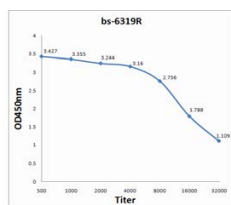
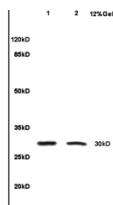
**Isotype:** IgG

**Molecular Weight:** 17/30kDa

**Preservatives:**

10ug/uL BSA and 0.1% NaN3.

For research use only. CAUTION: Not for human or animal therapeutic or diagnostic use.



For full size images and description please click [HERE](#).