

bs-7656R

• Rabbit Anti-ATAD5 Polyclonal Antibody

Primary Antibodies

Background:

ATAD5 is a homolog of a subunit of RFC (replication factor C) and has been shown to be down-regulated in response to replicative stress. ATAD5 may play a role in the surveillance of DNA damage and the cell's decision to survive or activate apoptosis.

Source/Purification:

KLH conjugated synthetic peptide derived from human ATAD5. Was purified by Protein A and peptide affinity chromatography.

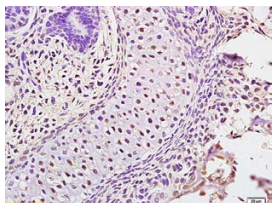
Storage:

Aqueous buffered solution containing 100ug/ml BSA, 50% glycerol and less than 0.09% sodium azide. Store at -20°C for 12 months. [Product without BSA and/or sodium azide is available for special order.]

Reconstitution:

If the antibody is in liquid form, no reconstitution needed.

Reconstitution is only required for the lyophilized antibody. Please refer to the reconstitution instruction card in the package.



For full size images and description please click [HERE](#).

Size: 100ul

Concentration: 1ug/uL

Host: Rabbit

Reactivities:

Human, Mouse, Rat, Chicken, Dog, Pig, Bovine, Rabbit,

Application:

- WB(1:100-500)
- ELISA(1:500-1000)
- IHC-P(1:100-500)
- IF(1:100-500)
- Not yet tested in other applications. Optimal working dilutions must be determined by the end user.

Antibody Type: Polyclonal

Isotype: IgG

Molecular Weight: 203kDa

Note:

For research use only. CAUTION: Not for human or animal therapeutic or diagnostic use.