

## bs-7659R

### • Rabbit Anti-DATF1/IDO1 Polyclonal Antibody

#### Primary Antibodies

#### Background:

Apoptosis plays an important role in many cellular processes. In mice, the death inducer obliterator 1 (Dio1) gene, a putative transcription factor, is upregulated by apoptotic signals and encodes a cytoplasmic protein that translocates to the nucleus upon apoptotic signal activation. Dio1 expression is upregulated when an apoptosis is detected. When overexpressed, the mouse protein induced apoptosis in cell lines growing in vitro. Human DATF1 (death associated transcription factor 1) is similar to the mouse gene and therefore is thought to be involved in apoptosis.

#### Source/Purification:

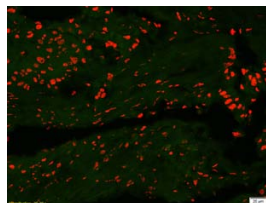
KLH conjugated synthetic peptide derived from human DATF1. Was purified by Protein A and peptide affinity chromatography.

**Storage:** Prepared as lyophilized powder or liquid and shipped on ice. Store at -20°C for one year.

#### Reconstitution:

If the antibody is in liquid form, no reconstitution needed.

Reconstitution is only required for the lyophilized antibody. Please refer to the reconstitution instruction card in the package.



**Size:** 100ul or 100ug lyophilized

**Concentration:** 1ug/uL

**Host:** Rabbit

#### Reactivities:

Human, Mouse, Rat, Chicken, Dog, Cow, Horse, Sheep,

#### Application:

- ELISA(1:500-1000)
- IHC-P(1:100-500)
- IHC-F(1:100-500)
- IF(1:100-500)
- Not yet tested in other applications. Optimal working dilutions must be determined by the end user.

**Antibody Type:** Polyclonal

**Isotype:** IgG

**Molecular Weight:** 244kDa

#### Preservatives:

10ug/uL BSA and 0.1% NaN<sub>3</sub>.

For research use only. CAUTION: Not for human or animal therapeutic or diagnostic use.

For full size images and description please click [HERE](#).