

bs-7690R

• Rabbit Anti-P2RX4 Polyclonal Antibody

Primary Antibodies

Background:

The P2X receptor family is comprised of ligand-gated ion channels that allow for the increased permeability of calcium into the cell in response to extracellular ATP. The seven P2X receptors, P2X1-P2X7, form either homomeric or heteromeric channels or both. They are characterized by intracellular amino- and carboxy-termini. P2X receptors are expressed in a wide variety of tissues, including neurons, prostate, bladder, pancreas, colon, testis and ovary. The major function of the P2X receptors is to mediate synaptic transmissions between neurons and to other tissues via the binding of extracellular ATP, which acts as a neurotransmitter. The P2X receptors may be involved in the onset of necrosis or apoptosis after prolonged exposure to high concentrations of extracellular ATP.

Source/Purification:

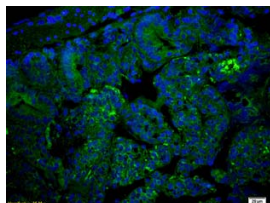
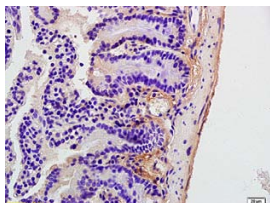
KLH conjugated synthetic peptide derived from human P2RX4. Was purified by Protein A and peptide affinity chromatography.

Storage: Prepared as lyophilized powder or liquid and shipped on ice. Store at -20°C for one year.

Reconstitution:

If the antibody is in liquid form, no reconstitution needed.

Reconstitution is only required for the lyophilized antibody. Please refer to the reconstitution instruction card in the package.



For full size images and description please click [HERE](#).

Size: 100ul or 100ug lyophilized

Concentration: 1ug/uL

Host: Rabbit

Reactivities: Human, Mouse, Rat, Dog, Cow,

Application:

- WB(1:100-500)
- ELISA(1:500-1000)
- IP(1:20-100)
- IHC-P(1:100-500)
- IHC-F(1:100-500)
- IF(1:100-500)
- Not yet tested in other applications.
Optimal working dilutions must be determined by the end user.

Antibody Type: Polyclonal

Isotype: IgG

Molecular Weight: 43kDa

Preservatives:

10ug/uL BSA and 0.1% NaN₃.

For research use only. CAUTION: Not for human or animal therapeutic or diagnostic use.