

Rabbit anti human/mouse pTie2 (pTyr992)

ORDERING INFORMATION

Catalog No:	pAP-0002
Size:	50 µl
Storage:	-20°C
Immunogen:	a synthetic phosphopeptide corresponding to residues surrounding Tyr992 of hTie2.
IgG Type:	Rabbit IgG
Applications:	WB and IHC
Species:	Human & Mouse

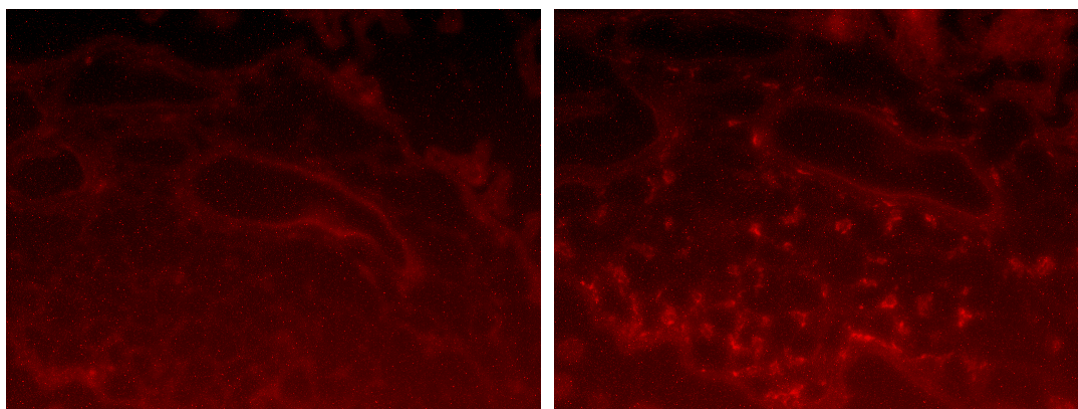
Preparation: The antibodies are produced by immunizing rabbits with a synthetic phosphopeptide (KLH-coupled) corresponding to residues surrounding Tyr992 of human Tie2. Antibodies are purified by protein A and peptide affinity chromatography.

Formulation and storage: Supplied in TBS (pH 7.4), 100 µg/ml BSA, 50% glycerol and less than 0.09% sodium azide. Store at -20°C.

Specificity: Phospho-Tie2 (Tyr992) rabbit polyclonal antibody detects phospho-Tie2 proteins in both human and mouse tissues.

Applications:

- | | | |
|----|---------------------------------------|-------------|
| 1. | Western blot | Yes (1:500) |
| 2. | Immunohistochemistry (frozen section) | Yes (1:50) |



Immunofluorescent staining of pTie2 (pTyr992): Acetone fixed human placental tissue specimen was subjected to immunofluorescent staining using pAP-0002. Note the endothelial specific positive signal in human placental tissues (right panel), while no positive signal is observed in adjacent section when primary antibody is omitted (left panel).