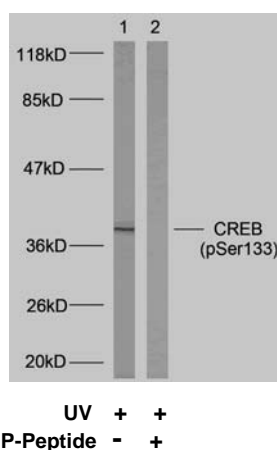


Rabbit anti CREB (pSer133)

- Catalog Number:** pAP11052
Amount: 100µl (for 10 Western Blotting)
Form of Antibody: Rabbit IgG in phosphate buffered saline (without Mg^{2+} and Ca^{2+}), pH 7.4, 150mM NaCl, 0.02% sodium azide and 50% glycerol.
Storage/Stability: Store at -20°C/1 year
Immunogen: The antiserum was produced against synthesized phosphopeptide derived from human CREB around the phosphorylation site of serine 133 (R-P-S^P-Y-R).
Purification: The antibody was affinity-purified from rabbit antiserum by affinity-chromatography using epitope-specific phosphopeptide. The antibody against non-phosphopeptide was removed by chromatography using non-phosphopeptide corresponding to the phosphorylation site.
Specificity/Sensitivity: CREB (phospho-Ser133) antibody detects endogenous levels of CREB only when phosphorylated at serine 133.
Reactivity: Human, Mouse, Rat
Applications: WB: 1:500~1:1000 IHC: 1:50~1:100
Swiss-Prot No. : P16220
References: Xing J, et al. (1998) Mol Cell Biol 18(4): 1946-55.
 Tan Y, et al. (1996) EMBO J; 15(17): 4629-42.
 Hao, M. et al. (1996) J. Biol. Chem. 271, 29380-29385.
 Mayo LD, et al. (2001) Biol Chem; 276(27): 25184-9.



Western blot analysis of extracts from HeLa cells using CREB (phospho-Ser133) antibody (pAP11052).

For Research Use Only

Contact & Ordering Information: Angio-Proteomie, 11 Park Drive, Suite 12, Boston, MA 02215, USA. Fax: (480) 247-4337, angioproteomie@gmail.com