

Rabbit anti HER-2 (pTyr877)

Catalog Number: pAP11075

Amount: 100µl (for 10 Western Blotting)

Form of Antibody: Rabbit IgG in phosphate buffered saline (without Mg²⁺ and Ca²⁺), pH 7.4, 150mM NaCl, 0.02% sodium azide and 50% glycerol.

Storage/Stability: Store at -20°C/1 year

Immunogen: The antiserum was produced against synthesized phosphopeptide derived from human HER2 around the phosphorylation site of tyrosine 877 (T-E-Y^P-H-A).

Purification: The antibody was affinity-purified from rabbit antiserum by affinity-chromatography using epitope-specific phosphopeptide. The antibody against non-phosphopeptide was removed by chromatography using non-phosphopeptide corresponding to the phosphorylation site.

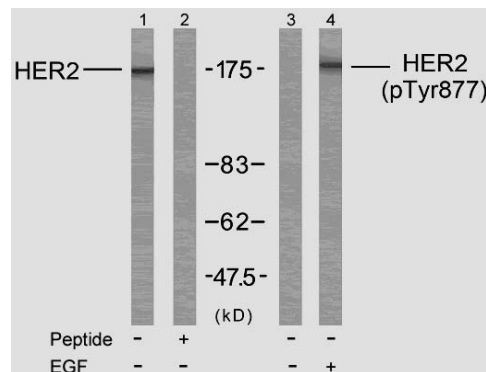
Specificity/Sensitivity: HER2 (phospho-Tyr877) antibody detects endogenous levels of HER2 only when phosphorylated at tyrosine 877.

Reactivity: Human, Mouse, Rat

Applications: WB: 1:1000

Swiss-Prot No. : P04626

References: Dittadi, R. et al. (2000) J. Natl. Cancer Inst. 92, 1443-1444.
Muthuswamy, S. K. et al. (1999) Mol. Cell. Biol. 19, 6845-6857.
Qian, X. et al. (1994) Proc. Natl. Acad. Sci. USA 91, 1500-1504.



Western blot analysis of extract from MDA-MB-231 cells treated or untreated with EGF using HER2 (Ab-877) Antibody (AP21070, Line 1 and 2) and HER2 (phospho-Tyr877) antibody (pAP11075, Line 3 and 4).

For Research Use Only

Contact & Ordering Information: Angio-Proteomie, 11 Park Drive, Suite 12, Boston, MA 02215, USA. Fax: (480) 247-4337, angioproteomie@gmail.com