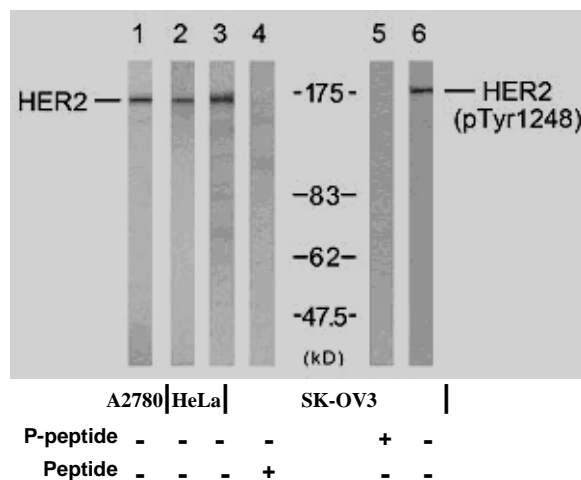


## Rabbit anti HER-2 (pTyr1248)

- Catalog Number:** pAP11079  
**Amount:** 100µl (for 10 Western Blotting)  
**Form of Antibody:** Rabbit IgG in phosphate buffered saline (without Mg<sup>2+</sup> and Ca<sup>2+</sup>), pH 7.4, 150mM NaCl, 0.02% sodium azide and 50% glycerol.  
**Storage/Stability:** Store at -20°C/1 year  
**Immunogen:** The antiserum was produced against synthesized phosphopeptide derived from human HER2 around the phosphorylation site of tyrosine1248 (P-E-Y<sup>P</sup>-L-G).  
**Purification:** The antibody was affinity-purified from rabbit antiserum by affinity-chromatography using epitope-specific phosphopeptide. The antibody against non-phosphopeptide was removed by chromatography using non-phosphopeptide corresponding to the phosphorylation site.  
**Specificity/Sensitivity:** HER2 (phospho-Tyr1248) antibody detects endogenous levels of HER2 only when phosphorylated at tyrosine1248.  
**Reactivity:** Human, Mouse, Rat  
**Applications:** WB: 1:1000  
**Swiss-Prot No. :** P04626  
**References:** Ramsauer VP, et al. (2003) J Biol Chem; 278(32): 30142-7.  
 Jepson S, et al. (2002) Oncogene; 21(49): 7524-32.  
 Ren Z, et al. (2002) J Biol Chem; 277(41): 38486-93.  
 Eppenberger-Castori S, et al. (2001) J Clin Oncol; 19(3): 645-56.



Western blot analysis using HER2 (Ab-1248) antibody (AP21072, Line 1, 2, 3 and 4) and HER2 (phospho-Tyr1248) antibody (pAP11079, Line 5 and 6).

**For Research Use Only**

Contact & Ordering Information: Angio-Proteomie, 11 Park Drive, Suite 12, Boston, MA 02215, USA. Fax: (480) 247-4337, [angioproteomie@gmail.com](mailto:angioproteomie@gmail.com)