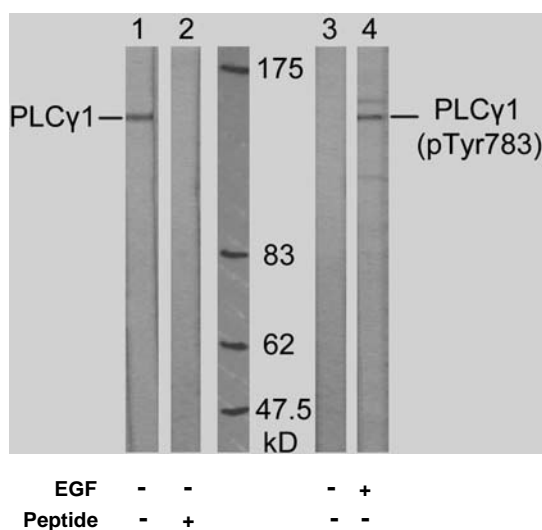


Rabbit anti PLC γ 1 (pTyr783)

- Catalog Number:** pAP11103
Amount: 100 μ l (for 10 Western Blotting)
Swiss-Prot No. : P19174
Form of Antibody: Rabbit IgG in phosphate buffered saline (without Mg²⁺ and Ca²⁺), pH 7.4, 150mM NaCl, 0.02% sodium azide and 50% glycerol.
Storage/Stability: Store at -20°C/1 year
Immunogen: The antiserum was produced against synthesized phosphopeptide derived from human PLC γ 1 around the phosphorylation site of tyrosine 783 (G-F-Y^P-V-E).
Purification: The antibody was affinity-purified from rabbit antiserum by affinity-chromatography using epitope-specific phosphopeptide. The antibody against non-phosphopeptide was removed by chromatography using non-phosphopeptide corresponding to the phosphorylation site.
Specificity/Sensitivity: PLC γ 1 (phospho-Tyr783) antibody detects endogenous levels of PLC γ 1 only when phosphorylated at tyrosine 783.
Reactivity: Human, Mouse, Rat
Applications: WB: 1:1000
References: DeBell KE, et al. Mol Cell Biol. 1999 Nov; 19(11): 7388-7398.
Veri MC, et al. Mol Cell Biol. 2001 Oct; 21(20): 6939-6950.
Sette C, et al. EMBO J. 2002 Oct 15; 21(20): 5386-5395.



Western blot analysis of extract from A431 cells, untreated or treated with EGF (200ng/ml, 10min), using PLC γ 1 (Ab-783) antibody (AP21129, Lane 1 and 2) and PLC γ 1 (phospho-Tyr783) antibody (pAP11103, Lane 3 and 4).

For Research Use Only

Contact & Ordering Information: Angio-Proteomie, 11 Park Drive, Suite 12, Boston, MA 02215, USA. Fax: (480) 247-4337, angioproteomie@gmail.com