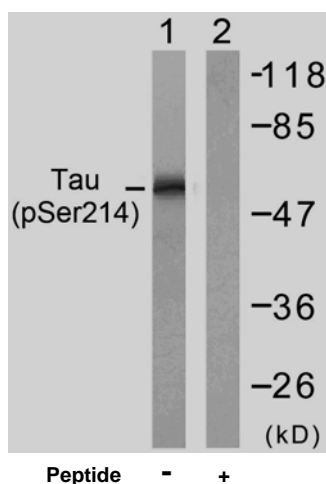


Rabbit anti Tau (pSer214)

- Catalog Number:** pAP11109
- Amount:** 100µl (for 10 Western Blotting)
- Form of Antibody:** Rabbit IgG in phosphate buffered saline (without Mg^{2+} and Ca^{2+}), pH 7.4, 150mM NaCl, 0.02% sodium azide and 50% glycerol.
- Storage/Stability:** Store at -20°C/1 year
- Immunogen:** The antiserum was produced against synthesized phosphopeptide derived from human Tau around the phosphorylation site of serine 214 (T-P-S^P-L-P).
- Purification:** The antibody was affinity-purified from rabbit antiserum by affinity-chromatography using epitope-specific phosphopeptide. The antibody against non-phosphopeptide was removed by chromatography using non-phosphopeptide corresponding to the phosphorylation site.
- Specificity/Sensitivity:** Tau (phospho-Ser214) antibody detects endogenous levels of Tau only when phosphorylated at serine 214.
- Reactivity:** Human, Mouse, Rat
- Applications:** WB: 1:1000
- Swiss-Prot No. :** P10636
- References:** Smet C, et al. (2005) FEBS Lett; 579(19): 4159-64.
Puig B, et al. (2005) Acta Neuropathol (Berl).
Gvtz J, et al. (2001) Science; 293(5534): 1491-5.
Illenberger S, et al. (1998) Mol Biol Cell; 9(6): 1495-512.



Western blot analysis of extracts from mouse brain tissue using Tau (phospho-Ser214) antibody (pAP11109).

For Research Use Only

Contact & Ordering Information: Angio-Proteomie, 11 Park Drive, Suite 12, Boston, MA 02215, USA. Fax: (480) 247-4337, angioproteomie@gmail.com