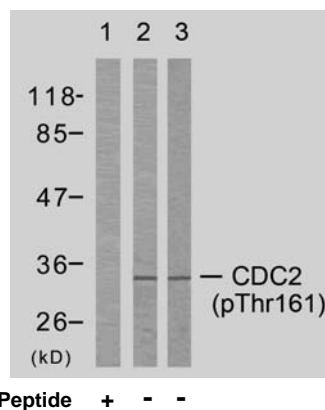


Rabbit anti CDC-2 (pThr161)

- Catalog Number:** pAP11134
Amount: 100µl (for 10 Western Blotting)
Form of Antibody: Rabbit IgG in phosphate buffered saline (without Mg²⁺ and Ca²⁺), pH 7.4, 150mM NaCl, 0.02% sodium azide and 50% glycerol.
Storage/Stability: Store at -20°C/1 year
Immunogen: The antiserum was produced against synthesized phosphopeptide derived from human CDC2 around the phosphorylation site of threonine161 (T-Y-T^P-H-E).
Purification: The antibody was affinity-purified from rabbit antiserum by affinity-chromatography using epitope-specific phosphopeptide. The antibody against non-phosphopeptide was removed by chromatography using non-phosphopeptide corresponding to the phosphorylation site.
Specificity/Sensitivity: CDC2 (phospho-Thr161) antibody detects endogenous levels of CDC2 only when phosphorylated at threonine 161.
Reactivity: Human, Mouse, Rat
Applications: WB: 1:500~1:1000
Swiss-Prot No. : P06493
References: Ukomadu C, et al.(2003) J Biol Chem; 278(7): 4840-6.
Morris MC, et al.(2002)J Biol Chem; 277(26): 23847-53.
Brown NR, et al.(1999)J Biol Chem; 274(13): 8746-56.
Liu Y, et al.(2004)J Biol Chem; 279(6): 4507-14.



Western blot analysis of extracts from COLO205 cells (Lane 1 and 2) and K562 cells (Lane 3), using CDC2 (phospho-Thr161) antibody (E011134).

For Research Use Only

Contact & Ordering Information: Angio-Proteomie, 11 Park Drive, Suite 12, Boston, MA 02215, USA. Fax: (480) 247-4337, angioproteomie@gmail.com