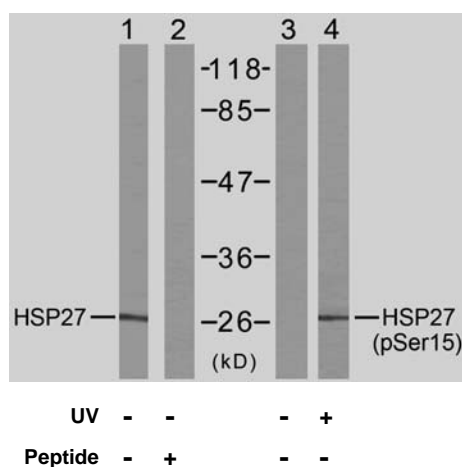


## Rabbit anti HSP27 (pSer15)

- Catalog Number:** pAP11164
- Amount:** 100µl (for 10 Western Blotting)
- Form of Antibody:** Rabbit IgG in phosphate buffered saline (without  $Mg^{2+}$  and  $Ca^{2+}$ ), pH 7.4, 150mM NaCl, 0.02% sodium azide and 50% glycerol.
- Storage/Stability:** Store at -20°C/1 year
- Immunogen:** The antiserum was produced against synthesized phosphopeptide derived from human HSP27 around the phosphorylation site of serine15 (G-P-S<sup>P</sup>-W-D).
- Purification:** The antibody was affinity-purified from rabbit antiserum by affinity-chromatography using epitope-specific phosphopeptide. The antibody against non-phosphopeptide was removed by chromatography using non-phosphopeptide corresponding to the phosphorylation site.
- Specificity/Sensitivity:** HSP27 (phospho-Ser15) antibody detects endogenous levels of HSP27 only when phosphorylated at serine 15.
- Reactivity:** Human, Mouse, Rat
- Applications:** WB: 1:1000
- Swiss-Prot No. :** P04792
- References:** Tremolada L, et al. (2005) Proteomics. 5(3): 788-795.  
McGregor E, et al. (2004) Mol Cell Proteomics. 3(2): 115-124.  
Benn SC, et al. (2002) Neuron. 36(1): 45-56.  
MacDonald JA, et al. (2002) Mol Cell Proteomics. 1(4): 314-322.



Western blot analysis of extract from HeLa cells using HSP27 (Ab-15) antibody (AP21144, Lane1 and 2) and HSP27 (phospho-Ser15) antibody (pAP11164, Lane 3 and 4).

**For Research Use Only**

Contact & Ordering Information: Angio-Proteomie, 11 Park Drive, Suite 12, Boston, MA 02215, USA. Fax: (480) 247-4337, [angioproteomie@gmail.com](mailto:angioproteomie@gmail.com)