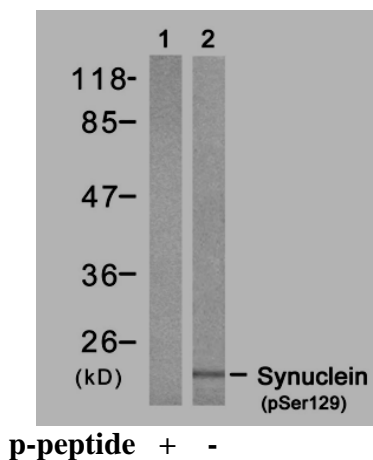


Rabbit anti α -Synuclein (pSer129)

Catalog Number:	pAP011171
Amount:	100 μ l (for 10 Western Blotting)
Swiss-Prot No. :	P37840
Form of Antibody:	Rabbit IgG in phosphate buffered saline (without Mg ²⁺ and Ca ²⁺), pH 7.4, 150mM NaCl, 0.02% sodium azide and 50% glycerol.
Storage/Stability:	Store at -20°C/1 year
Immunogen:	The antiserum was produced against synthesized phosphopeptide derived from human α -Synuclein around the phosphorylation site of serine 129 (M-P-S ^P -E-E).
Purification:	The antibody was affinity-purified from rabbit antiserum by affinity-chromatography using epitope-specific phosphopeptide. The antibody against non-phosphopeptide was removed by chromatography using non-phosphopeptide corresponding to the phosphorylation site.
Specificity/Sensitivity:	α -Synuclein (phospho-Ser129) antibody detects endogenous levels of α -Synuclein only when phosphorylated at serine 129.
Reactivity:	Human, Mouse, Rat
Applications:	WB: 1:500~1000
References:	Jakowec MW, et al. (2001) Dev Neurosci. 23(2):91-9. Kitamura Y, et al. (2001) Brain Res. 898(1):181-5. El-Agnaf OM, et al. (2006) FASEB J. 20(3):419-25.



Western blot analysis of extract from mouse brain tissue, using α -Synuclein (phospho-Ser129) antibody (pAP11171).

For Research Use Only

Contact & Ordering Information: Angio-Proteomie, 11 Park Drive, Suite 12, Boston, MA 02215, USA. Fax: (480) 247-4337, angioproteomie@gmail.com