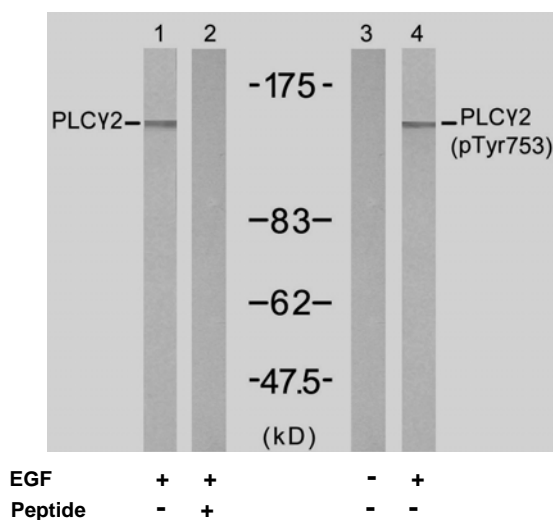


## Rabbit anti PLC $\gamma$ 2 (pTyr753)

- Catalog Number:** pAP11175  
**Amount:** 100 $\mu$ l (for 10 Western Blotting)  
**Swiss-Prot No. :** P16885  
**Form of Antibody:** Rabbit IgG in phosphate buffered saline (without Mg<sup>2+</sup> and Ca<sup>2+</sup>), pH 7.4, 150mM NaCl, 0.02% sodium azide and 50% glycerol.  
**Storage/Stability:** Store at -20°C/1 year  
**Immunogen:** The antiserum was produced against synthesized phosphopeptide derived from human PLC $\gamma$ 2 around the phosphorylation site of tyrosine 753 (S-L-Y<sup>P</sup>-D-V).  
**Purification:** The antibody was affinity-purified from rabbit antiserum by affinity-chromatography using epitope-specific phosphopeptide. The antibody against non-phosphopeptide was removed by chromatography using non-phosphopeptide corresponding to the phosphorylation site.  
**Specificity/Sensitivity:** PLC $\gamma$ 2 (phospho-Tyr753) antibody detects endogenous levels of PLC $\gamma$ 2 only when phosphorylated at tyrosine 753.  
**Reactivity:** Human, Mouse, Rat  
**Applications:** WB: 1:1000  
**References:** Kim YJ, et al. (2004) Mol Cell Biol 24: 9986-9999  
 Humphries LA, et al. (2004) J Biol Chem 279 : 37651-37661  
 Suzuki-Inoue K, et al. (2004) Biochem J 378 : 1023-1029  
 Rodriguez R, et al. (2003) Biochem J 374 : 269-280



Western blot analysis of extract from A431 cells, untreated or treated with EGF (200ng/ml, 5min), using PLC $\gamma$ 2 (Ab-753) antibody (AP21186, Lane 1 and 2) and PLC $\gamma$ 2 (phospho-Tyr753) antibody (pAP11175, Lane 3 and 4).

**For Research Use Only**

Contact & Ordering Information: Angio-Proteomie, 11 Park Drive, Suite 12, Boston, MA 02215, USA. Fax: (480) 247-4337, [angioproteomie@gmail.com](mailto:angioproteomie@gmail.com)