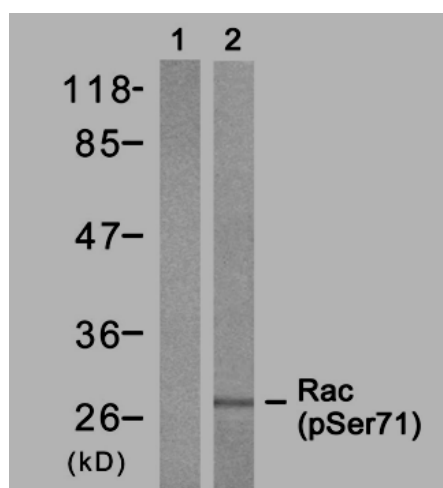


## Rabbit anti Rac1 (pSer71)

<b>Catalog Number:</b>	pAP11203-
<b>Amount:</b>	100µl (for 10 Western Blotting)
<b>Swiss-Prot No. :</b>	P15154
<b>Form of Antibody:</b>	Rabbit IgG in phosphate buffered saline (without $Mg^{2+}$ and $Ca^{2+}$ ), pH 7.4, 150mM NaCl, 0.02% sodium azide and 50% glycerol.
<b>Storage/Stability:</b>	Store at -20°C/1 year
<b>Immunogen:</b>	The antiserum was produced against synthesized phosphopeptide derived from human Rac1 around the phosphorylation site of serine 71 (P-L-S <sup>P</sup> -Y-P).
<b>Purification:</b>	The antibody was affinity-purified from rabbit antiserum by affinity-chromatography using epitope-specific phosphopeptide. The antibody against non-phosphopeptide was removed by chromatography using non-phosphopeptide corresponding to the phosphorylation site.
<b>Specificity/Sensitivity:</b>	Rac1 (phospho-Ser71) antibody detects endogenous levels of Rac1 only when phosphorylated at serine 71.
<b>Reactivity:</b>	Human, Mouse, Rat
<b>Applications:</b>	WB:1:1000
<b>References:</b>	Woods A,(2007)J Biol Chem.282(32):23500-8. Burnham CA,et al.(2007)FEMS Microbiol Lett.272(1):8-14. Thurnherr T,et al. (2006)J Neurosci. 26(40):10110-9.



PMA                      -                      +

Western blot analysis of extract from 293 cell untreated or treated with PMA, using Rac1 (phospho-Ser71) antibody (pAP11203).

**For Research Use Only**