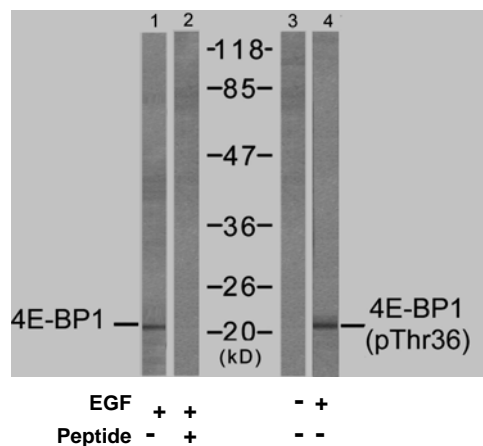


Rabbit anti 4E-BP1 (pThr36)

- Catalog Number:** pAP11222
Amount: 100µl (for 10 Western Blotting)
Swiss-Prot No. : Q13541
All Names: 4E-BP1, eIF4E-binding protein 1, Phosphorylated heat- and acid-stable protein regulated by insulin 1, PHAS-I
All Sites: Human: Thr36 or Thr37; Mouse: Thr35; Rat: Thr35
Form of Antibody: Rabbit IgG in phosphate buffered saline (without Mg²⁺ and Ca²⁺), pH 7.4, 150mM NaCl, 0.02% sodium azide and 50% glycerol.
Storage/Stability: Store at -20°C/1 year
Immunogen: The antiserum was produced against synthesized phosphopeptide derived from human 4E-BP1 around the phosphorylation site of threonine 36 (S-T-T^P-P-G).
Purification: The antibody was affinity-purified from rabbit antiserum by affinity-chromatography using epitope-specific phosphopeptide. The antibody against non-phosphopeptide was removed by chromatography using non-phosphopeptide corresponding to the phosphorylation site.
Specificity/Sensitivity: 4E-BP1 (phospho-Thr36)) antibody detects endogenous levels of 4E-BP1 only when phosphorylated at threonine 36. This antibody may cross-react with 4E-BP2 and 4E-BP3 when phosphorylated at equivalent sites.
Reactivity: Human, Mouse, Rat
Applications: WB: 1:1000
References: Gingras AC, et al. Genes Dev Nov. 2005 Feb 15.
 Mothe-Satney I, et al.(2000) J Biol Chem:15(21): 2852-64.
 Gingras AC, et al.(1999) Genes Dev:13(11): 1422-37.
 Lal L, et al.(2005) Blood;105(4): 1669-7.



Western blot analysis of extracts from MDA-MB-435 cells, untreated or EGF-treated (200 ng/ml, 30min), using 4E-BP1 (Ab-36) antibody (AP21215, Lane 1 and 2) and 4E-BP1 (phospho-Thr36) antibody (pAP11222, Lane 3 and 4).

For Research Use Only

Contact & Ordering Information: Angio-Proteomie, 11 Park Drive, Suite 12, Boston, MA 02215, USA. Fax: (480) 247-4337, angioproteomie@gmail.com