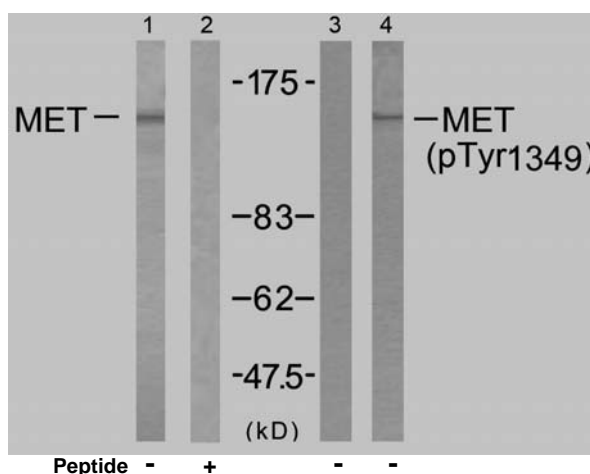


## Rabbit anti Met (pTyr1349)

- Catalog Number:** pAP11238  
**Amount:** 100µl (for 10 Western Blotting)  
**Swiss-Prot No. :** P08581  
**Form of Antibody:** Rabbit IgG in phosphate buffered saline (without Mg<sup>2+</sup> and Ca<sup>2+</sup>), pH 7.4, 150mM NaCl, 0.02% sodium azide and 50% glycerol.  
**Storage/Stability:** Store at -20°C/1 year  
**Immunogen:** The antiserum was produced against synthesized phosphopeptide derived from human Met around the phosphorylation site of tyrosine 1349 (E-H-Y<sup>P</sup>-V-H).  
**Purification:** The antibody was affinity-purified from rabbit antiserum by affinity-chromatography using epitope-specific phosphopeptide. The antibody against non-phosphopeptide was removed by chromatography using non-phosphopeptide corresponding to the phosphorylation site.  
**Specificity/Sensitivity:** Met (phospho-Tyr1349) antibody detects endogenous levels of Met only when phosphorylated at tyrosine 1349.  
**Reactivity:** Human, Mouse, Rat  
**Applications:** WB: 1:1000  
**References:** Fan S, et al. (2001) Mol Cell Biol; 21(15): 4968-4984  
 Schiering N, et al. (2003) Proc Natl Acad Sci U S A; 100(22): 12654-12659  
 Plopper GE, et al. (1995) Mol Biol Cell; 6(10): 1349-1365  
 Ponzetto C, et al. (1993) Mol Cell Biol; 13(8): 4600-4608



Western blot analysis of extract from HepG2 cells, using Met (Ab-1349) antibody (AP21230, Line1 and 2) and Met (phospho-Tyr1349) antibody (pAP11238, Line 3 and 4).

**For Research Use Only**

Contact & Ordering Information: Angio-Proteomie, 11 Park Drive, Suite 12, Boston, MA 02215, USA. Fax: (480) 247-4337, [angioproteomie@gmail.com](mailto:angioproteomie@gmail.com)