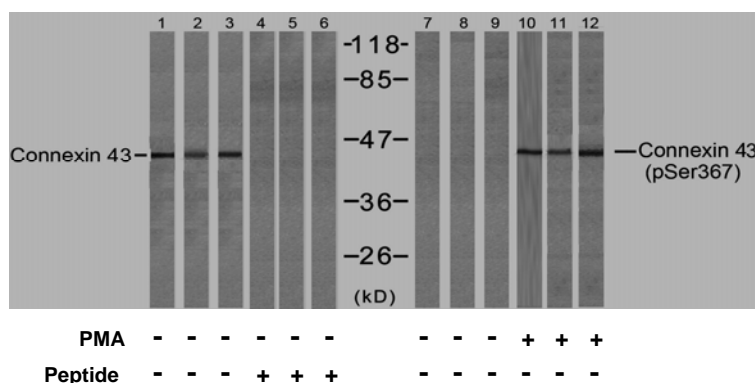


Rabbit anti Connexin43 (pSer367)

- Catalog Number:** pAP11258
Amount: 100µl (for 10 Western Blotting)
Swiss-Prot No. : P17302
Form of Antibody: Rabbit IgG in phosphate buffered saline (without Mg^{2+} and Ca^{2+}), pH 7.4, 150mM NaCl, 0.02% sodium azide and 50% glycerol.
Storage/Stability: Store at -20°C/1 year
Immunogen: The antiserum was produced against synthesized phosphopeptide derived from human Connexin43 around the phosphorylation site of serine 367 (R-A-S^P-S-R).
Purification: The antibody was affinity-purified from rabbit antiserum by affinity-chromatography using epitope-specific phosphopeptide. The antibody against non-phosphopeptide was removed by chromatography using non-phosphopeptide corresponding to the phosphorylation site.
Specificity/Sensitivity: Connexin43 (phospho-Ser367) antibody detects endogenous levels of Connexin43 only when phosphorylated at serine 367.
Reactivity: Human, Mouse, Rat
Applications: WB: 1:1000
References: Joell L. Solan¹, et al. (2003) Cell Science 116: 2203-2211
 Satoshi Matsushita, et al. (2006) Histochemistry and Cytochemistry 54 (3): 343-353,
 Xiaoyong Bao, et al. (2004) Cell Physiol 286: C647-C654
 W. E. I. Li, et al. (1998) European Journal of Neuroscience 10: 2444



Western blot analysis of extracts from HeLa (Line 1, 4, 7 and 10), K562 (Line 2, 5, 8 and 11) and 293 (Line 3, 6, 9 and 12) cells, untreated or treated with PMA (1µM 30min), using Connexin43 (Ab-367) antibody (AP21250, Lane 1, 2, 3, 4, 5 and 6) and Connexin43 (phospho-Ser367) antibody (pAP11258, Lane 7, 8, 9, 10, 11 and 12).

For Research Use Only

Contact & Ordering Information: Angio-Proteomie, 11 Park Drive, Suite 12, Boston, MA 02215, USA. Fax: (480) 247-4337, angioproteomie@gmail.com