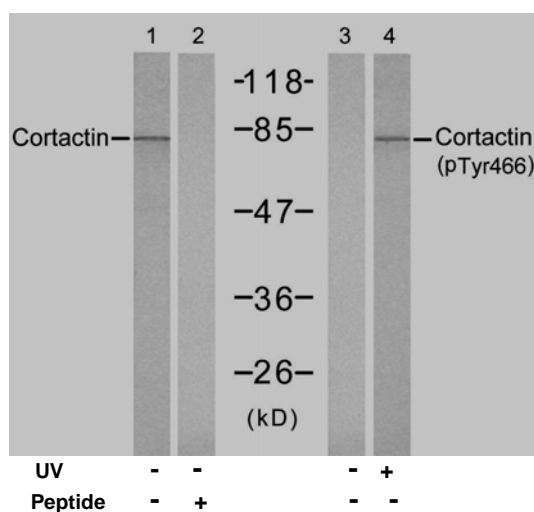


## Rabbit anti Cortactin (pTyr466)

- Catalog Number:** pAP11272  
**Amount:** 100µl (for 10 Western Blotting)  
**Swiss-Prot No. :** Q14247  
**Form of Antibody:** Rabbit IgG in phosphate buffered saline (without Mg<sup>2+</sup> and Ca<sup>2+</sup>), pH 7.4, 150mM NaCl, 0.02% sodium azide and 50% glycerol.  
**Storage/Stability:** Store at -20°C/1 year  
**Immunogen:** The antiserum was produced against synthesized phosphopeptide derived from mouse Cortactin around the phosphorylation site of tyrosine 466 (P-V-Y<sup>P</sup>-E-T).  
**Purification:** The antibody was affinity-purified from rabbit antiserum by affinity-chromatography using epitope-specific phosphopeptide. The antibody against non-phosphopeptide was removed by chromatography using non-phosphopeptide corresponding to the phosphorylation site.  
**Specificity/Sensitivity:** Cortactin (Phospho-Tyr466) antibody detects endogenous levels of Cortactin only when phosphorylated at tyrosine 466.  
**Reactivity:** Human, Mouse  
**Applications:** WB: 1:1000  
**References:** Luo C, et al. (2006) J Biol Chem ; 281(40):30081-30093  
 Head JA, et al. (2003) Mol Biol Cell ;14(8):3216-3229  
 Li Y, et al. (2000) J Biol Chem ; 275(47): 37187-37193  
 Kinley AW, et al. (2003) Curr Biol ; 13(5): 384-393



Western blot analysis of extracts from Hela cells, untreated or treated with UV (20min), using Cortactin (Ab-466) antibody (AP21264, Lane 1 and 2) and Cortactin (pTyr466) antibody (pAP11272, Lane 3 and 4).

**For Research Use Only**

Contact & Ordering Information: Angio-Proteomie, 11 Park Drive, Suite 12, Boston, MA 02215, USA. Fax: (480) 247-4337, [angioproteomie@gmail.com](mailto:angioproteomie@gmail.com)