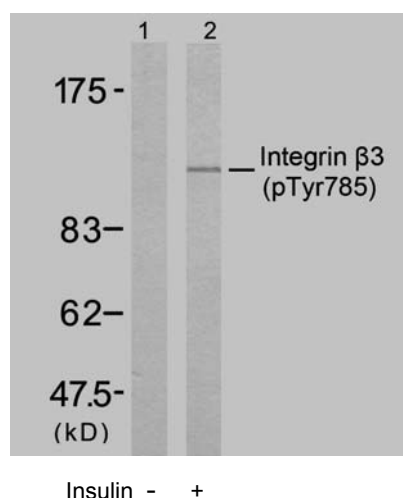


Rabbit anti Integrin $\beta 3$ (pTyr785)

- Catalog Number:** pAP11282
Amount: 100 μ l (for 10 Western Blotting)
Swiss-Prot No. : P05106
Form of Antibody: Rabbit IgG in phosphate buffered saline (without Mg²⁺ and Ca²⁺), pH 7.4, 150mM NaCl, 0.02% sodium azide and 50% glycerol.
Storage/Stability: Store at -20°C/1 year
Immunogen: The antiserum was produced against synthesized phosphopeptide derived from human Integrin $\beta 3$ around the phosphorylation site of tyrosine 785 (I-T-Y^P-R-G).
Purification: The antibody was affinity-purified from rabbit antiserum by affinity-chromatography using epitope-specific phosphopeptide. The antibody against non-phosphopeptide was removed by chromatography using non-phosphopeptide corresponding to the phosphorylation site.
Specificity/Sensitivity: Integrin $\beta 3$ (Phospho-Tyr785) antibody detects endogenous levels of Integrin $\beta 3$ only when phosphorylated at tyrosine 785.
Reactivity: Human, Mouse, Rat
Applications: WB: 1:1000
References: Sujoy Bhattacharya, et al. (2006) Biochem J. August 1; 397(Pt 3): 437–447
Courter DL, et al. (2005) J Biol Chem Apr 01; 280(13): 12145-12151
Chandhoke SK, et al. (2004) J Cell Sci Mar 15; 117(Pt 8): 1431-1441



Western blot analysis of extract from A431 cells untreated or treated with Insulin (40 μ g/ml, 15min), using Integrin $\beta 3$ (phospho-Tyr785) antibody (pAP11282, Lane 1 and 2).

For Research Use Only

Contact & Ordering Information: Angio-Proteomie, 11 Park Drive, Suite 12, Boston, MA 02215, USA. Fax: (480) 247-4337, angioproteomie@gmail.com