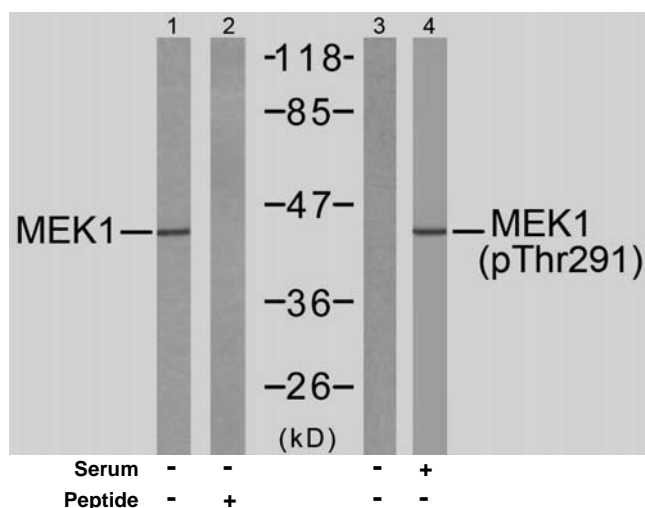


Rabbit anti MEK1 (pThr291)

- Catalog Number:** pAP11294
Amount: 100µl (for 10 Western Blotting)
Swiss-Prot No. : Q02750
Form of Antibody: Rabbit IgG in phosphate buffered saline (without Mg²⁺ and Ca²⁺), pH 7.4, 150mM NaCl, 0.02% sodium azide and 50% glycerol.
Storage/Stability: Store at -20°C/1 year
Immunogen: The antiserum was produced against synthesized phosphopeptide derived from human MEK1 around the phosphorylation site of threonine 291 (P-R-T^P-P-G).
Purification: The antibody was affinity-purified from rabbit antiserum by affinity-chromatography using epitope-specific phosphopeptide. The antibody against non-phosphopeptide was removed by chromatography using non-phosphopeptide corresponding to the phosphorylation site.
Specificity/Sensitivity: MEK1 (phospho-Thr291) antibody detects endogenous levels of MEK1 only when phosphorylated at threonine 291.
Reactivity: Human, Mouse, Rat
Applications: WB: 1:1000
References: Kevin D. Burroughs, et.al. (2003) Mol. Cancer Res ; 1: 312.
Michael J. Piatelli, et.al. (2002) J. Biol. Chem ; 277: 12144 - 12150.
Margaret M. Morgan, et.al. (2001) J. Immunol ; 167: 5708.
Herbert Schramek, et.al. (2003) Am J Physiol Cell Physiol ; 285: C652 - C661.



Western blot analysis of extracts from 293 cells untreated or treated with 10% serum, using MEK1 (Ab-291) antibody (AP21286, Line 1 and 2) and MEK1 (phospho-Thr291) antibody (pAP11294, Line 3 and 4).

For Research Use Only

Contact & Ordering Information: Angio-Proteomie, 11 Park Drive, Suite 12, Boston, MA 02215, USA. Fax: (480) 247-4337, angioproteomie@gmail.com