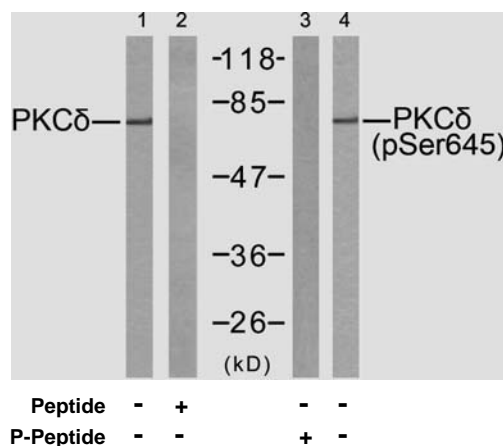


## Rabbit anti PKC $\delta$ (pSer645)

- Catalog Number:** pAP11296  
**Amount:** 100 $\mu$ l (for 10 Western Blotting)  
**Swiss-Prot No. :** Q05655  
**All Names:** PRKCD , Protein kinase C delta type  
**Form of Antibody:** Rabbit IgG in phosphate buffered saline (without Mg<sup>2+</sup> and Ca<sup>2+</sup>), pH 7.4, 150mM NaCl, 0.02% sodium azide and 50% glycerol.  
**Storage/Stability:** Store at -20°C/1 year  
**Immunogen:** The antiserum was produced against synthesized phosphopeptide derived from human PKC $\delta$  around the phosphorylation site of serine 645 (R-L-S<sup>P</sup>-Y-S).  
**Purification:** The antibody was affinity-purified from rabbit antiserum by affinity-chromatography using epitope-specific phosphopeptide. The antibody against non-phosphopeptide was removed by chromatography using non-phosphopeptide corresponding to the phosphorylation site.  
**Specificity/Sensitivity:** PKC $\delta$  (phospho-Ser645) antibody detects endogenous levels of PKC $\delta$  only when phosphorylated at serine 645.  
**Reactivity:** Human, Mouse, Rat  
**Applications:** WB: 1:500~1:1000 IHC: 1:50~1:100  
**References:** Kei Sakamoto, et.al. (2003) Am J Physiol Endocrinol Metab ; 285: E1081 - E1088.  
 Ling Zhang, et.al. (2004) J. Biol. Chem ; 279: 28315 - 28319.  
 Kristof Van Kolen et.al. (2006) FEBS J ; 273: 1843 - 1854.  
 Martin Villalba, et.al. (2002) J. Cell Biol ; 157: 253.



Western blot analysis of extracts from MCF7 cells using PKC $\delta$  (Ab-645) antibody (AP21296, Line 1 and 2) and PKC $\delta$  (phospho-Ser645) antibody (pAP11296, Line 3 and Line 4).

**For Research Use Only**

Contact & Ordering Information: Angio-Proteomie, 11 Park Drive, Suite 12, Boston, MA 02215, USA. Fax: (480) 247-4337, [angioproteomie@gmail.com](mailto:angioproteomie@gmail.com)